

SAGA[®]

Interior Jewel



MESMERISING AND
MAGNIFICENT

WE ARE SAGA®

Interior Jewel
HARDWARE



"Established in 1989... It's been 33 years of our company, we are grateful for the response of our consumers as they have always supported us starting from the smallest level we have achieved a great success by our hard-work and your great enthusiasm.

We have been working in our casting field since long... From our 20s we have a well developed and up-to-date casting all in one house. Till 2013 we observed that we have covered almost every corner of our great country. Our finishing quality attracts most people. Apart from these we also have a greatly arranged foreign export business.

We are grateful to tell you that we have more than 1000 products for the better interior of your house. Our products have never been questioned with the quality issues. We are using a very modern technologies in our wide machinery.

For giving a highly fashionable look to your house we are having vast varieties of house equipment also we are sharing our personalized reviews with our valuable customers. Our coating and plating have a long lasting life and it satisfies the urge of looking upgraded to the world. Our success have reached to the skies but we can never forget the love and support of our consumers who are actually a family to us. We are having a large work place under a single doom almost covering 25000+ square feet. We use machine separate for every varieties like die casting machine , lathe machine, turning machine, nickel plant, lacquer plant and many more."

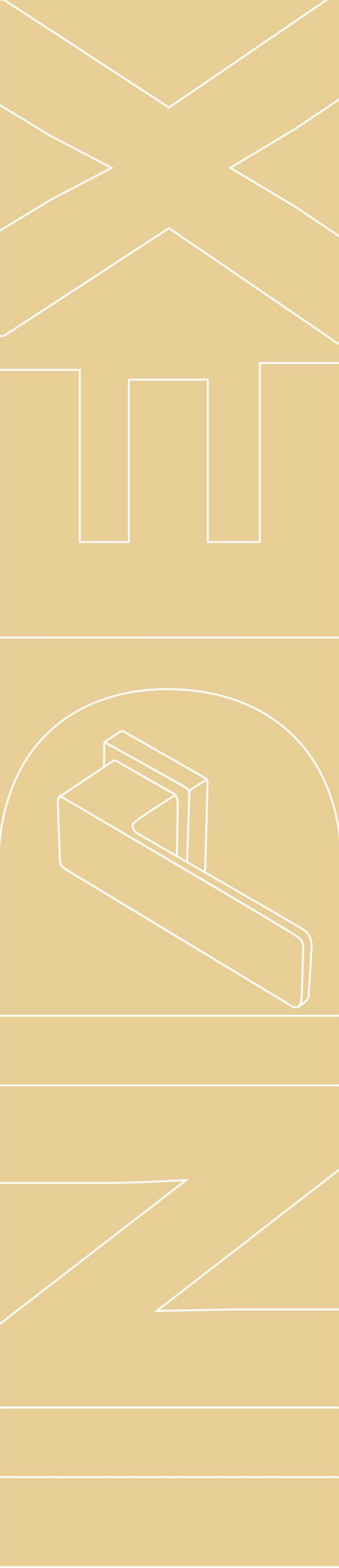
Finish Code System

| CODE | DETAILS |
|------|---------------------------------|
| CP | Chrome Plated |
| CPTT | Chrome Plated Tutone |
| SS | Stainless Steel |
| STT | Silver Tutone |
| CPSS | Chrome Plated / Stainless Steel |
| BA | Brass Antique |
| CA | Copper Antique |
| SIL | Silver |

Finish Code System

| CODE | DETAILS |
|------|--------------|
| GG | Gold Glossy |
| GM | Gold Matt |
| GTT | Gold Tutone |
| SG | Silver Gold |
| RG | Rose Gold |
| BG | Black Glossy |
| BM | Black Matt |
| ZBM | Z Black Matt |

| | |
|----|----------------------------|
| 03 | MORTISE |
| 19 | KY MORTISE SERIES |
| 21 | LOCK BODY |
| 23 | EURO PROFILE CYLINDER |
| 24 | RIM LOCK |
| 25 | DOOR CLOSER |
| 27 | PULL SERIES |
| 30 | MDH SERIES |
| 37 | CABINET SERIES |
| 47 | AL. WARDROBE HANDLE SERIES |
| 49 | AL. PROFILE SERIES |
| 50 | DRAWER KADI |
| 53 | SLIDING DOOR HANDLES |
| 55 | COAT HOOK |
| 57 | ZINC KHUTI |
| 59 | KNOBS |
| 61 | KEY HOLE |
| 63 | DOOR VIEWER |
| 64 | VACUUM SELF BUTTON |
| 65 | GLASS HINGES |
| 66 | MAGNET |
| 67 | TOWER BOLT |
| 69 | FURNITURE FITTINGS |
| 71 | DOOR KIT |





MH-01

| Finish | Rose Set | Plate 200MM | Plate 240MM |
|--------------------|----------|-------------|-------------|
| CP/SS/BA/CA | 3228.00 | 3173.00 | 3353.00 |
| GG/GM/RG/BM/BG/ZBM | 3617.00 | 3651.00 | 3858.00 |

Material : Zinc



MH-03

| Finish | Rose Set | Plate 200MM | Plate 240MM |
|--------------------|----------|-------------|-------------|
| CP/SS/BA/CA | 3437.00 | 3382.00 | 3562.00 |
| GG/GM/RG/BM/BG/ZBM | 3849.00 | 3889.00 | 4097.00 |

Material : Zinc

MORTISE SERIES



| Finish | Rose Set | Plate 200MM | Plate 240MM |
|--------------------|----------|-------------|-------------|
| CP/SS/BA/CA | 3115.00 | 2984.00 | 3160.00 |
| GG/GM/RG/BM/BG/ZBM | 3489.00 | 3432.00 | 3634.00 |

Material : Zinc

MH-04



| Finish | Rose Set | Plate 200MM | Plate 240MM |
|-----------------|----------|-------------|-------------|
| CP/STT/BA/CA | 3120.00 | 2989.00 | 3165.00 |
| SG/RG/BM/BG/ZBM | 3494.00 | 3439.00 | 3641.00 |

Material : Zinc

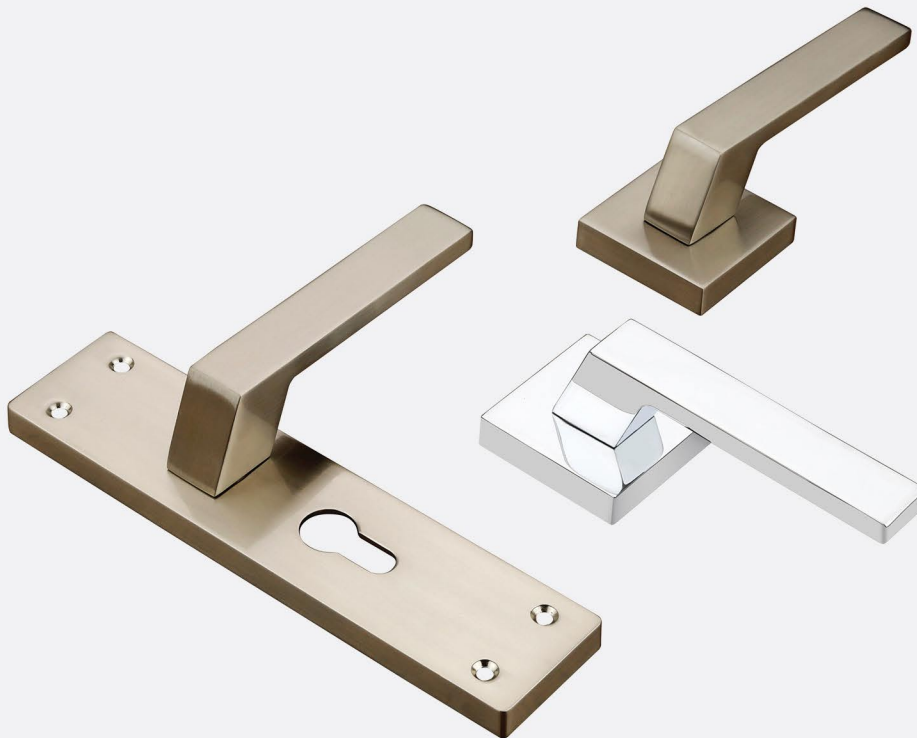
MH-09



| Finish | Rose Set | Plate 200MM | Plate 240MM |
|-----------------|----------|-------------|-------------|
| CP/STT/BA/CA | 2882.00 | 2752.00 | 2928.00 |
| SG/RG/BM/BG/ZBM | 3230.00 | 3166.00 | 3368.00 |

Material : Zinc

MH-13



| Finish | Rose Set | Plate 200MM | Plate 240MM |
|--------------------|----------|-------------|-------------|
| CP/SS/BA/CA | 2849.00 | 2794.00 | 2974.00 |
| GG/GM/RG/BM/BG/ZBM | 3191.00 | 3213.00 | 3420.00 |

Material : Zinc

MH-14

MORTISE SERIES



| Finish | Rose Set | Plate 200MM | Plate 240MM |
|--------------------|----------|-------------|-------------|
| CP/SS/BA/CA | 2817.00 | 2792.00 | 2973.00 |
| GG/GM/RG/BM/BG/ZBM | 3155.00 | 3211.00 | 3418.00 |

Material : Zinc

MH-15



| Finish | Rose Set | Plate 200MM | Plate 240MM |
|--------------------|----------|-------------|-------------|
| CP/SS/BA/CA | 3405.00 | 3285.00 | 3465.00 |
| GG/GM/RG/BM/BG/ZBM | 3813.00 | 3776.00 | 3985.00 |

Material : Zinc

MH-16



| Finish | Rose Set | Plate 200MM | Plate 240MM |
|--------------------|----------|-------------|-------------|
| CP/SS/BA/CA | 3243.00 | 3188.00 | 3368.00 |
| GG/GM/RG/BM/BG/ZBM | 3632.00 | 3666.00 | 3873.00 |

Material : Zinc

MH-19



| Finish | Rose Set | Plate 200MM | Plate 240MM |
|--------------------|----------|-------------|-------------|
| CP/SS/BA/CA | 3098.00 | 3118.00 | 3298.00 |
| GG/GM/RG/BM/BG/ZBM | 3469.00 | 3585.00 | 3793.00 |

Material : Zinc

MH-20

MORTISE SERIES



| Finish | Rose Set | Plate 200MM | Plate 240MM |
|--------------------|----------|-------------|-------------|
| CP/SS/BA/CA | 3078.00 | 3023.00 | 3123.00 |
| GG/GM/RG/BM/BG/ZBM | 3447.00 | 3475.00 | 3591.00 |

Material : Zinc

MH-21



| Finish | Rose Set | Plate 200MM | Plate 240MM |
|--------------------|----------|-------------|-------------|
| CP/SS/BA/CA | 2974.00 | 2994.00 | 3175.00 |
| GG/GM/RG/BM/BG/ZBM | 3332.00 | 3444.00 | 3651.00 |

Material : Zinc

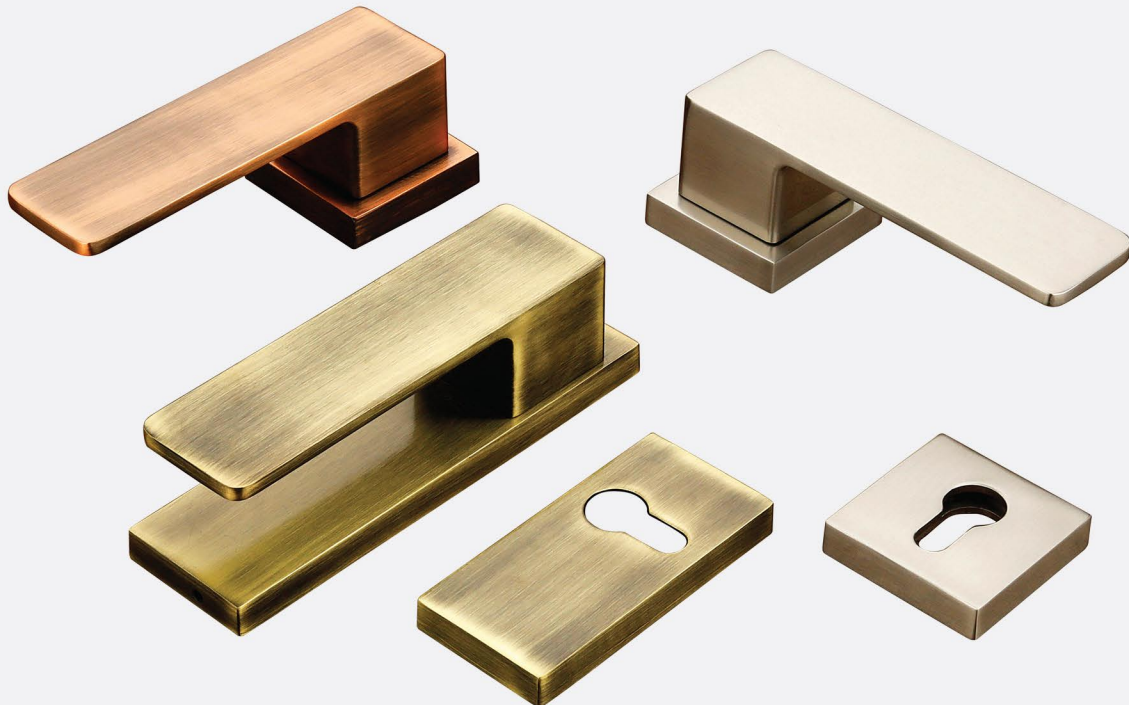
MH-27



| Finish | Rose Set | Plate 200MM | Plate 240MM |
|--------------------|----------|-------------|-------------|
| CP/SS/BA/CA | 2862.00 | 2882.00 | 3063.00 |
| GG/GM/RG/BM/BG/ZBM | 3206.00 | 3315.00 | 3522.00 |

Material : Zinc

MH-28



| Finish | Rose Set | Horizontal Plate |
|--------------------|----------|------------------|
| CP/SS/BA/CA | 3622.00 | 4043.00 |
| GG/GM/RG/BM/BG/ZBM | 4056.00 | 4649.00 |

Material : Zinc

MH-29

MORTISE SERIES



| Finish | Rose Set | Plate 200MM | Plate 240MM |
|--------------|----------|-------------|-------------|
| CPTT/BA/CA | 3200.00 | 3210.00 | 3385.00 |
| GTT/SG/ZBMGG | 3584.00 | 3691.00 | 3893.00 |

Material : Zinc

MH-30



| Finish | Rose Set | Plate 200MM | Plate 240MM |
|--------------------|----------|-------------|-------------|
| CP/SS/BA/CA | 2958.00 | 2998.00 | 3178.00 |
| GG/GM/RG/BM/BG/ZBM | 3313.00 | 3449.00 | 3656.00 |

Material : Zinc

MH-31



| Finish | Rose Set | Plate 200MM | Plate 240MM |
|--------------------|----------|-------------|-------------|
| CP/SS/BA/CA | 3074.00 | 3049.00 | 3230.00 |
| GG/GM/RG/BM/BG/ZBM | 3444.00 | 3507.00 | 3714.00 |

Material : Zinc

MH-32

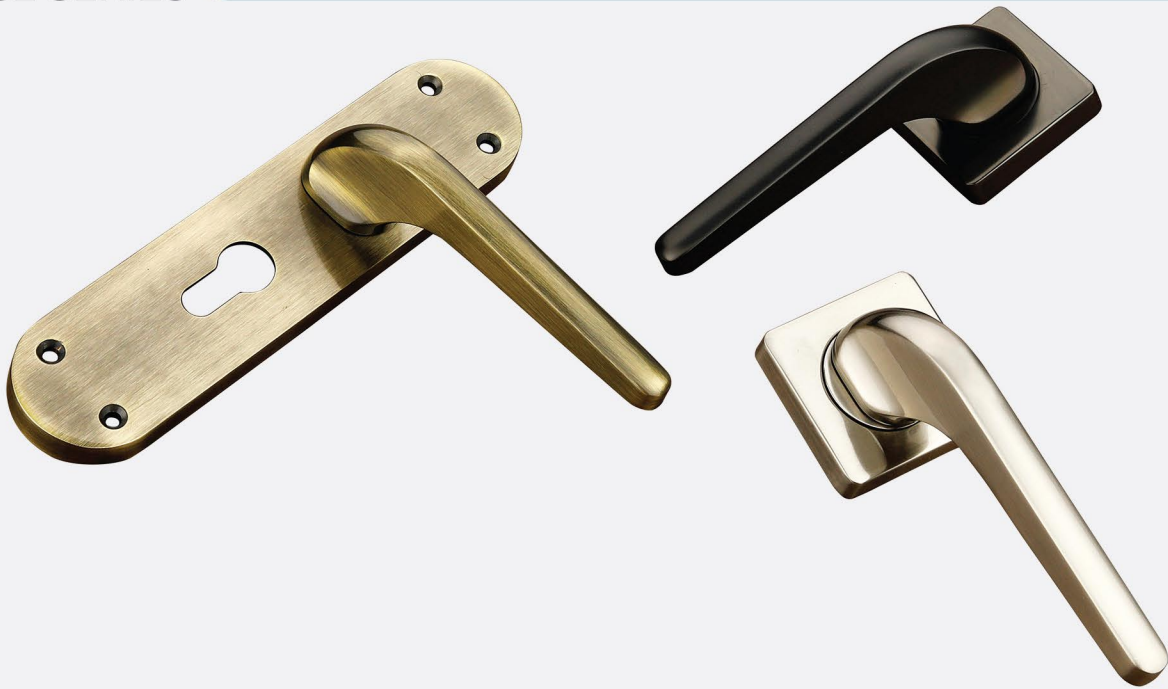


| Finish | Rose Set | Plate 200MM | Plate 240MM |
|--------------------|----------|-------------|-------------|
| CP/SS/BA/CA | 3206.00 | 3230.00 | 3410.00 |
| GG/GM/RG/BM/BG/ZBM | 3572.00 | 3714.00 | 3921.00 |

Material : Zinc

MH-33

MORTISE SERIES



| Finish | Rose Set | Plate 200MM | Plate 240MM |
|--------------------|----------|-------------|-------------|
| CP/SS/BA/CA | 2826.00 | 2801.00 | 2981.00 |
| GG/GM/RG/BM/BG/ZBM | 3165.00 | 3220.00 | 3429.00 |

Material : Zinc

MH-34



| Finish | Rose Set | Plate 200MM | Plate 240MM |
|--------------|----------|-------------|-------------|
| CPTT/BA/CA | 3382.00 | 3251.00 | 3427.00 |
| GTT/SG/ZBMGG | 3788.00 | 3739.00 | 3941.00 |

Material : Zinc

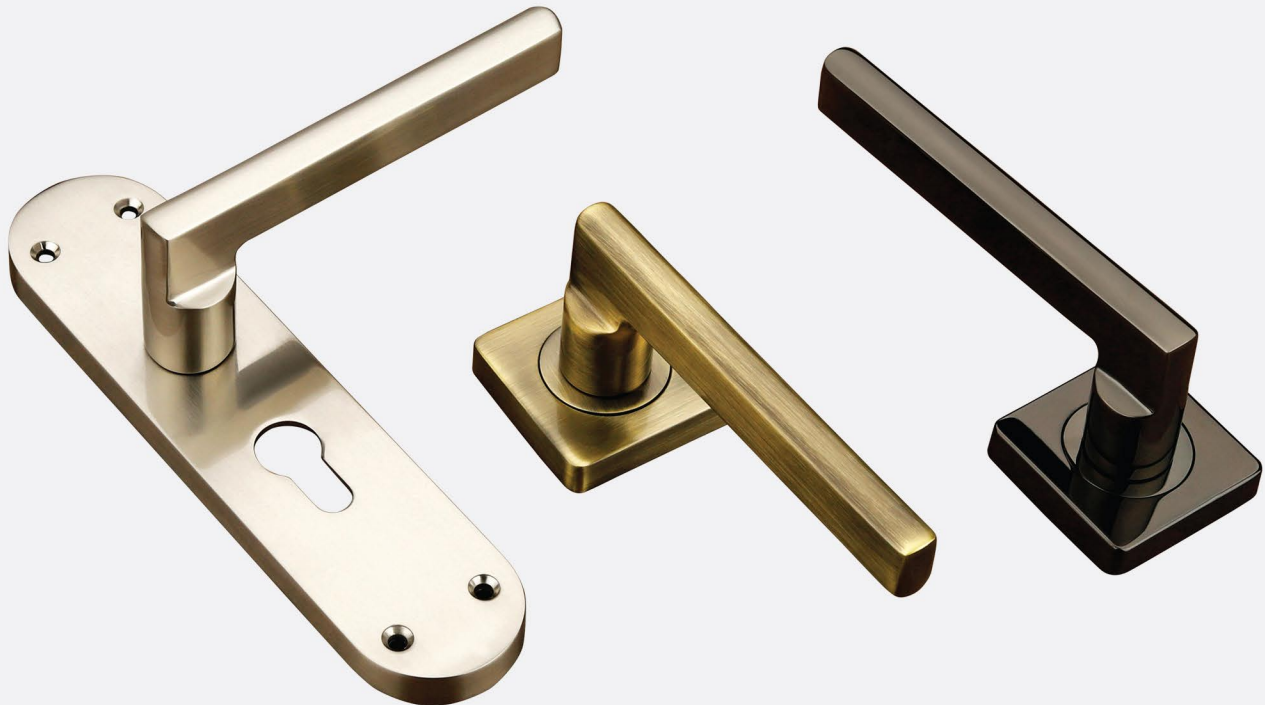
MH-36



| Finish | Rose Set | Plate 200MM | Plate 240MM |
|--------------------|----------|-------------|-------------|
| CP/SS/BA/CA | 2859.00 | 2879.00 | 3059.00 |
| GG/GM/RG/BM/BG/ZBM | 3201.00 | 3310.00 | 3519.00 |

Material : Zinc

MH-37



| Finish | Rose Set | Plate 200MM | Plate 240MM |
|--------------------|----------|-------------|-------------|
| CP/SS/BA/CA | 3026.00 | 3001.00 | 3181.00 |
| GG/GM/RG/BM/BG/ZBM | 3390.00 | 3452.00 | 3659.00 |

Material : Zinc

MH-38

MORTISE SERIES



| Finish | Rose Set | Plate 200MM | Plate 240MM |
|--------------------|----------|-------------|-------------|
| CP/SS/BA/CA | 3001.00 | 3021.00 | 3201.00 |
| GG/GM/RG/BM/BG/ZBM | 3362.00 | 3474.00 | 3682.00 |

Material : Zinc

MH-39



| Finish | Rose Set | Plate 200MM | Plate 240MM |
|--------------|----------|-------------|-------------|
| CPTT/BA/CA | 2981.00 | 3001.00 | 3181.00 |
| GTT/SG/ZBMGG | 3338.00 | 3452.00 | 3659.00 |

Material : Zinc

MH-40



| Finish | Rose Set | Plate 200MM | Plate 240MM |
|--------------------|----------|-------------|-------------|
| CP/SS/BA/CA | 2836.00 | 2856.00 | 3036.00 |
| GG/GM/RG/BM/BG/ZBM | 3176.00 | 3285.00 | 3492.00 |

Material : Zinc

MH-41

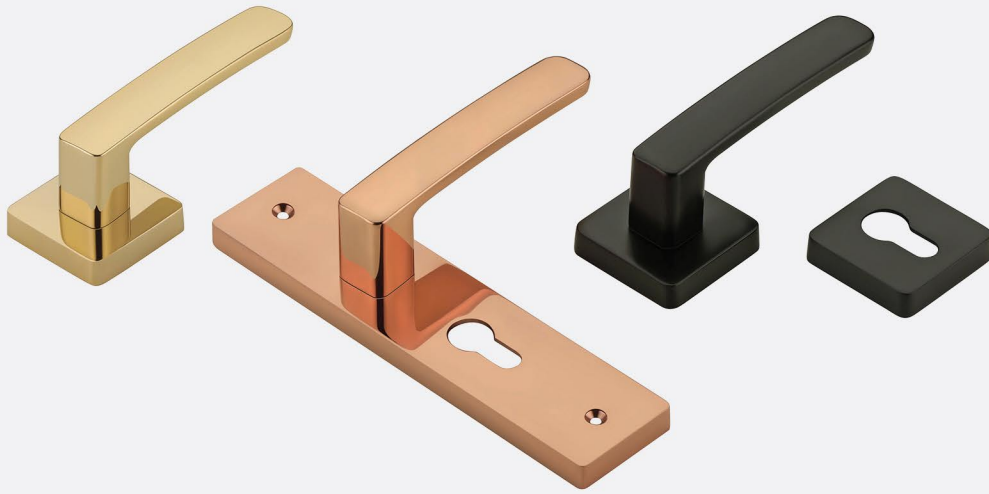


| Finish | Rose Set | Plate 200MM | Plate 240MM |
|--------------------|----------|-------------|-------------|
| CP/SS/BA/CA | 2931.00 | 2891.00 | 3071.00 |
| GG/GM/RG/BM/BG/ZBM | 3283.00 | 3325.00 | 3532.00 |

Material : Zinc

MH-42

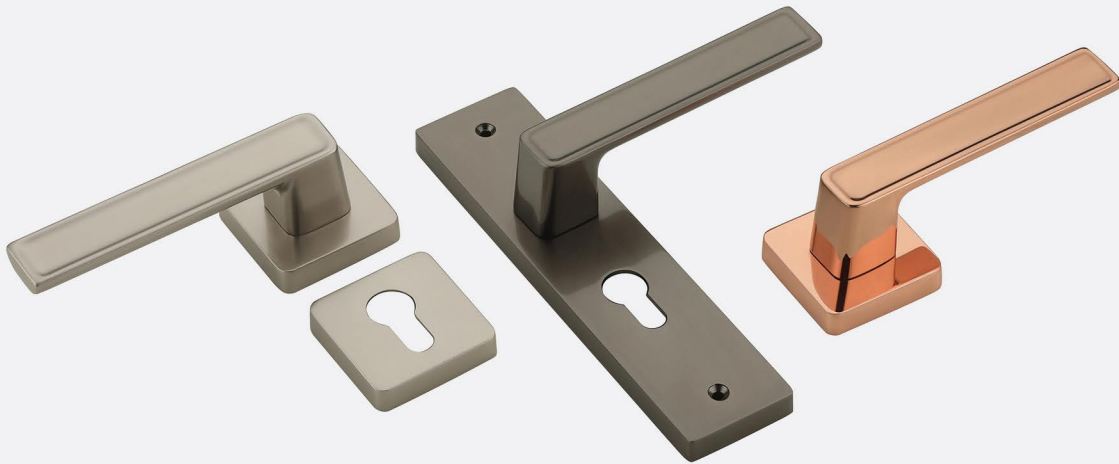
MORTISE SERIES



MH-43

Material : Zinc

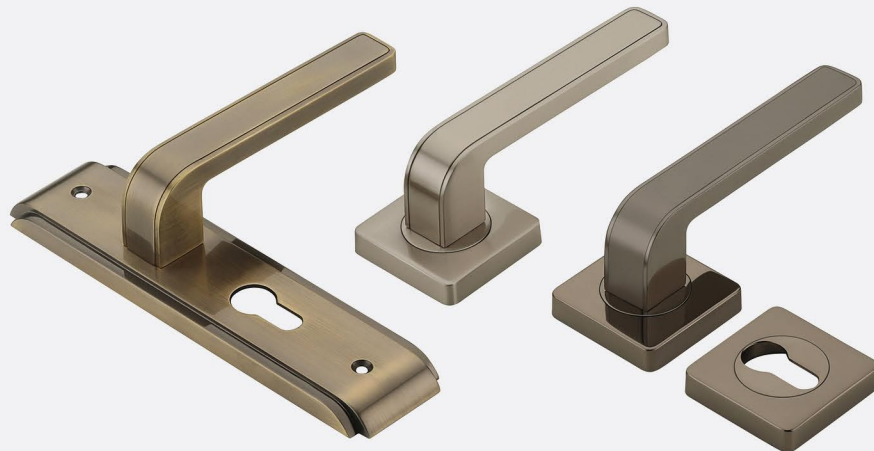
| Finish | Rose Set | Plate 200MM | Plate 240MM |
|--------------------|----------|-------------|-------------|
| CP/SS/BA/CA | 2891.00 | 2916.00 | 3096.00 |
| GG/GM/RG/BM/BG/ZBM | 3238.00 | 3353.00 | 3560.00 |



MH-44

Material : Zinc

| Finish | Rose Set | Plate 200MM | Plate 240MM |
|--------------------|----------|-------------|-------------|
| CP/SS/BA/CA | 2996.00 | 3021.00 | 3201.00 |
| GG/GM/RG/BM/BG/ZBM | 3355.00 | 3474.00 | 3682.00 |



MH-45

Material : Zinc

| Finish | Rose Set | Plate 200MM | Plate 240MM |
|--------------|----------|-------------|-------------|
| CPTT/BA/CA | 3006.00 | 2971.00 | 3146.00 |
| GTT/SG/ZBMGG | 3367.00 | 3417.00 | 3619.00 |

COMBO SET PRICE

| Model | Finish | Rose Set Lock Body (45x85) KNK 60mm 3 Key | Plate 200MM Lock Body (50x50) KNK 60mm 3 Key | Plate 240MM Lock Body (45x85) KNK 60mm 3 Key |
|-------|--------|---|--|--|
| MH-01 | SS | 5152.00 | 5023.00 | 5277.00 |
| | BA | 5401.00 | 5296.00 | 5526.00 |
| | BM | 5897.00 | 5880.00 | 6137.00 |
| MH-03 | SS | 5361.00 | 5232.00 | 5486.00 |
| | BA | 5610.00 | 5504.00 | 5735.00 |
| | BM | 6129.00 | 6119.00 | 6376.00 |
| MH-04 | SS | 5038.00 | 4835.00 | 5083.00 |
| | BA | 5287.00 | 5107.00 | 5332.00 |
| | BM | 5768.00 | 5661.00 | 5913.00 |
| MH-09 | STT | 5043.00 | 4840.00 | 5088.00 |
| | BA | 5292.00 | 5112.00 | 5337.00 |
| | BM | 5773.00 | 5668.00 | 5920.00 |
| MH-13 | STT | 4806.00 | 4603.00 | 4851.00 |
| | BA | 5055.00 | 4875.00 | 5100.00 |
| | BM | 5509.00 | 5396.00 | 5648.00 |
| MH-14 | SS | 4773.00 | 4644.00 | 4898.00 |
| | BA | 5022.00 | 4916.00 | 5147.00 |
| | BM | 5471.00 | 5443.00 | 5700.00 |
| MH-15 | SS | 4741.00 | 4643.00 | 4896.00 |
| | BA | 4990.00 | 4915.00 | 5145.00 |
| | BM | 5434.00 | 5441.00 | 5698.00 |
| MH-16 | SS | 5329.00 | 5135.00 | 5389.00 |
| | BA | 5578.00 | 5407.00 | 5638.00 |
| | BM | 6092.00 | 6005.00 | 6264.00 |
| MH-19 | SS | 5167.00 | 5038.00 | 5292.00 |
| | BA | 5416.00 | 5311.00 | 5541.00 |
| | BM | 5912.00 | 5895.00 | 6152.00 |
| MH-20 | SS | 5022.00 | 4968.00 | 5222.00 |
| | BA | 5271.00 | 5240.00 | 5471.00 |
| | BM | 5748.00 | 5815.00 | 6072.00 |
| MH-21 | SS | 5002.00 | 4873.00 | 5047.00 |
| | BA | 5250.00 | 5145.00 | 5296.00 |
| | BM | 5726.00 | 5705.00 | 5870.00 |
| MH-27 | SS | 4898.00 | 4845.00 | 5099.00 |
| | BA | 5147.00 | 5117.00 | 5347.00 |
| | BM | 5611.00 | 5673.00 | 5930.00 |
| MH-28 | SS | 4786.00 | 4733.00 | 4987.00 |
| | BA | 5035.00 | 5005.00 | 5235.00 |
| | BM | 5486.00 | 5544.00 | 5802.00 |
| MH-29 | SS | 5546.00 | 5893.00 | - |
| | BA | 5795.00 | 6166.00 | - |
| | BM | 6336.00 | 6879.00 | - |
| MH-30 | SSCP | 5124.00 | 5060.00 | 5309.00 |
| | BA | 5372.00 | 5332.00 | 5558.00 |
| | BM | 5863.00 | 5920.00 | 6172.00 |

COMBO SET PRICE

| Model | Finish | Rose Set Lock Body (45x85) KNK 60mm 3 Key | Plate 200MM Lock Body (50x50) KNK 60mm 3 Key | Plate 240MM Lock Body (45x85) KNK 60mm 3 Key |
|-------|--------|---|--|--|
| MH-31 | SS | 4881.00 | 4848.00 | 5102.00 |
| | BA | 5130.00 | 5120.00 | 5351.00 |
| | BM | 5593.00 | 5678.00 | 5935.00 |
| MH-32 | SS | 4998.00 | 4900.00 | 5154.00 |
| | BA | 5247.00 | 5172.00 | 5402.00 |
| | BM | 5723.00 | 5736.00 | 5994.00 |
| MH-33 | SS | 5114.00 | 5080.00 | 5334.00 |
| | BA | 5362.00 | 5352.00 | 5583.00 |
| | BM | 5852.00 | 5944.00 | 6201.00 |
| MH-34 | SS | 4749.00 | 4651.00 | 4905.00 |
| | BA | 4998.00 | 4923.00 | 5154.00 |
| | BM | 5444.00 | 5449.00 | 5708.00 |
| MH-36 | SSCP | 5306.00 | 5102.00 | 5351.00 |
| | BA | 5554.00 | 5374.00 | 5600.00 |
| | BM | 6067.00 | 5969.00 | 6221.00 |
| MH-37 | SS | 4783.00 | 4729.00 | 4983.00 |
| | BA | 5032.00 | 5002.00 | 5232.00 |
| | BM | 5481.00 | 5539.00 | 5798.00 |
| MH-38 | SS | 4950.00 | 4851.00 | 5105.00 |
| | BA | 5199.00 | 5124.00 | 5354.00 |
| | BM | 5670.00 | 5681.00 | 5939.00 |
| MH-39 | SS | 4925.00 | 4871.00 | 5125.00 |
| | BA | 5174.00 | 5144.00 | 5374.00 |
| | BM | 5641.00 | 5703.00 | 5962.00 |
| MH-40 | SSCP | 4905.00 | 4851.00 | 5105.00 |
| | BA | 5154.00 | 5124.00 | 5354.00 |
| | BM | 5618.00 | 5681.00 | 5939.00 |
| MH-41 | SS | 4760.00 | 4706.00 | 4960.00 |
| | BA | 5008.00 | 4978.00 | 5209.00 |
| | BM | 5456.00 | 5514.00 | 5772.00 |
| MH-42 | SS | 4855.00 | 4741.00 | 4995.00 |
| | BA | 5104.00 | 5013.00 | 5244.00 |
| | BM | 5563.00 | 5554.00 | 5812.00 |
| MH-43 | SS | 4815.00 | 4766.00 | 5020.00 |
| | BA | 5063.00 | 5038.00 | 5269.00 |
| | BM | 5518.00 | 5583.00 | 5840.00 |
| MH-44 | SS | 4920.00 | 4871.00 | 5125.00 |
| | BA | 5169.00 | 5144.00 | 5374.00 |
| | BM | 5635.00 | 5703.00 | 5962.00 |
| MH-45 | SSCP | 4930.00 | 4821.00 | 5070.00 |
| | BA | 5179.00 | 5094.00 | 5319.00 |
| | BM | 5646.00 | 5646.00 | 5898.00 |

**Combo Set For
Other Cylinder Size**

For KNK Combo 70mm 3key Add **+105rs.** To Above MRP.
For BSK Combo 60mm 3key Less **-95rs.** To Above MRP.
For BSK Combo 70mm 3key Same As To Above MRP.



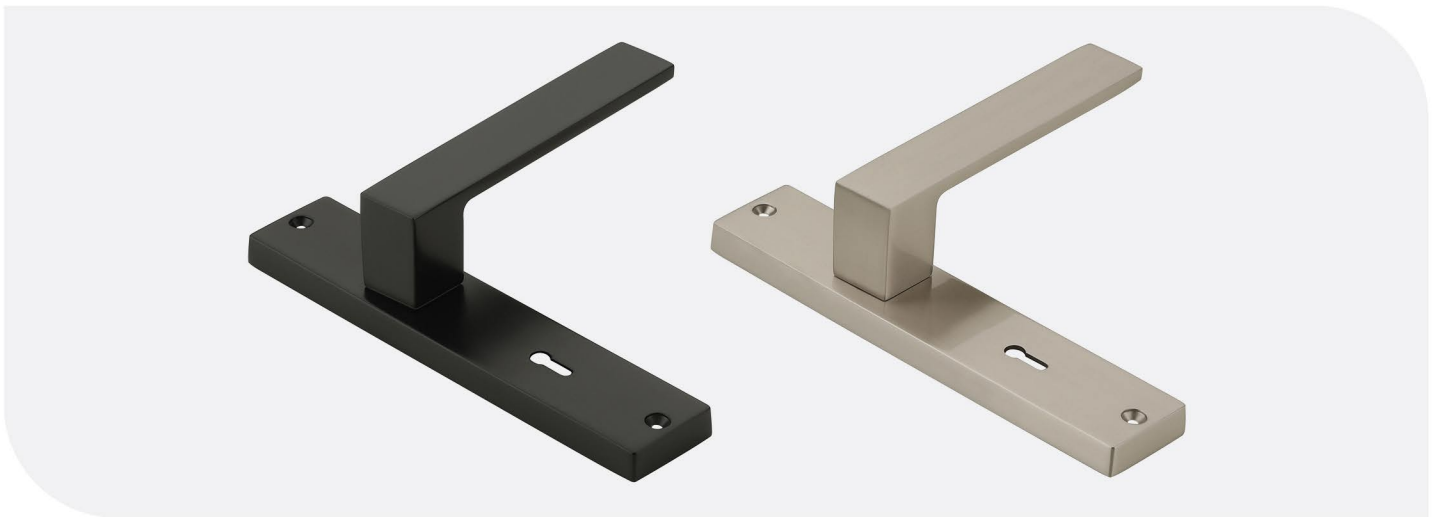
KY-01
Material : Zinc

| Finish | Plate 160MM | Combo Set |
|-----------------|-------------|-----------|
| CP/SS/BA/CA | 2161.00 | 2628.00 |
| GG/RG/BM/BG/ZBM | 2594.00 | 3061.00 |



KY-02
Material : Zinc

| Finish | Plate 160MM | Combo Set |
|-----------------|-------------|-----------|
| CP/SS/BA/CA | 2166.00 | 2633.00 |
| GG/RG/BM/BG/ZBM | 2599.00 | 3066.00 |



KY-03
Material : Zinc

| Finish | Plate 160MM | Combo Set |
|-----------------|-------------|-----------|
| CP/SS/BA/CA | 2432.00 | 2899.00 |
| GG/RG/BM/BG/ZBM | 2919.00 | 3386.00 |

KY MORTISE SERIES



KY-04

Material : Zinc

| Finish | Plate 160MM | Combo Set |
|-----------------|-------------|-----------|
| CP/SS/BA/CA | 2291.00 | 2758.00 |
| GG/RG/BM/BG/ZBM | 2749.00 | 3216.00 |



KY-05

Material : Zinc

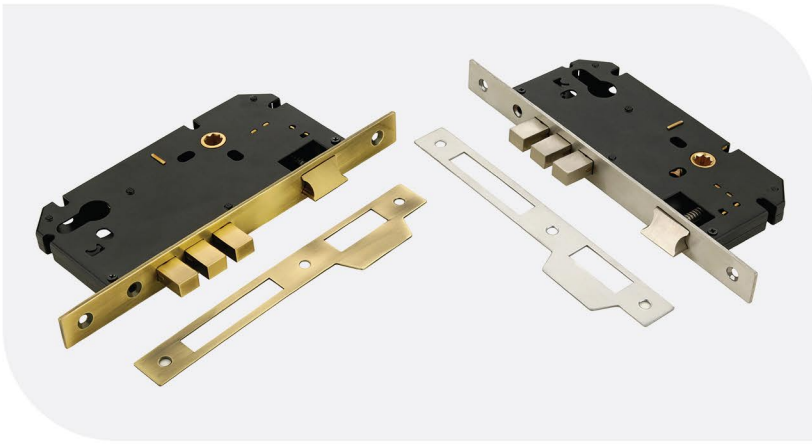
| Finish | Plate 160MM | Combo Set |
|-----------------|-------------|-----------|
| CP/SS/BA/CA | 2375.00 | 2842.00 |
| GG/RG/BM/BG/ZBM | 2849.00 | 3316.00 |



KY-06

Material : Zinc

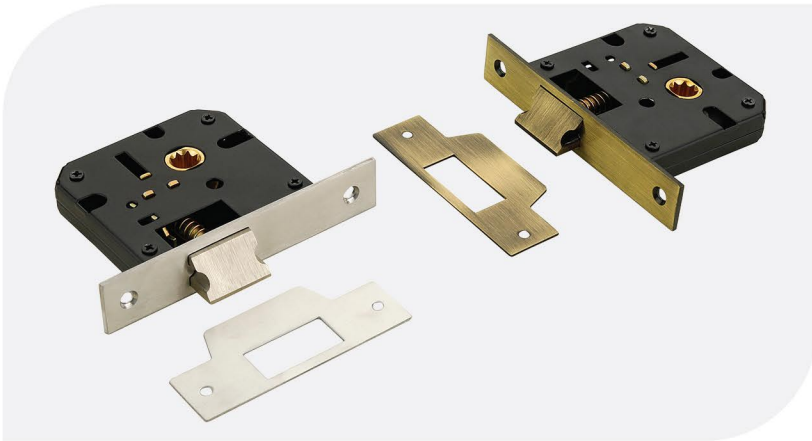
| Finish | Plate 160MM | Combo Set |
|-----------------|-------------|-----------|
| CP/SS/BA/CA | 2416.00 | 2883.00 |
| GG/RG/BM/BG/ZBM | 2899.00 | 3366.00 |



LOCK BODY

MATERIAL : BRASS + MS

| Finish | 45x85 | 50x50 | 60x85 |
|-------------|---------|---------|---------|
| SS | 992.00 | 913.00 | 1174.00 |
| BA/BM | 1174.00 | 1122.00 | 1358.00 |
| RG/GG (PVD) | 1477.00 | 1397.00 | 1656.00 |



BATHROOM LATCH

MATERIAL : BRASS + MS

| Finish | 50MM | 60MM |
|--------|--------|--------|
| SS | 469.00 | 574.00 |
| BA | 548.00 | 653.00 |

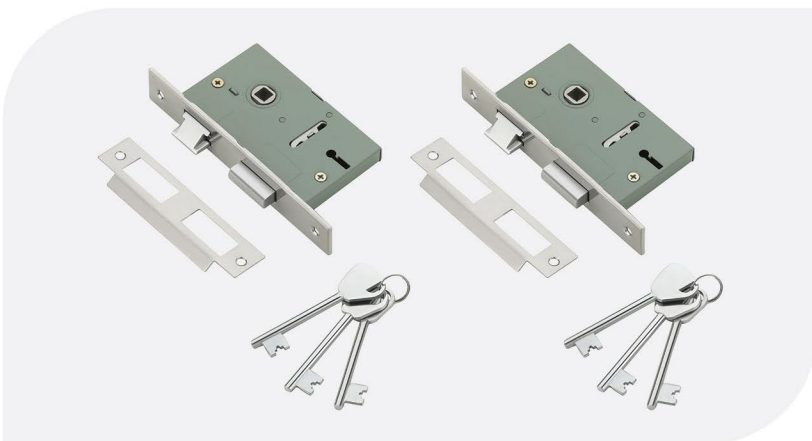


DEAD LOCK

WITH KEY HALL

MATERIAL : BRASS + MS

| Finish | 45MM |
|--------|---------|
| SS | 992.00 |
| BA | 1149.00 |



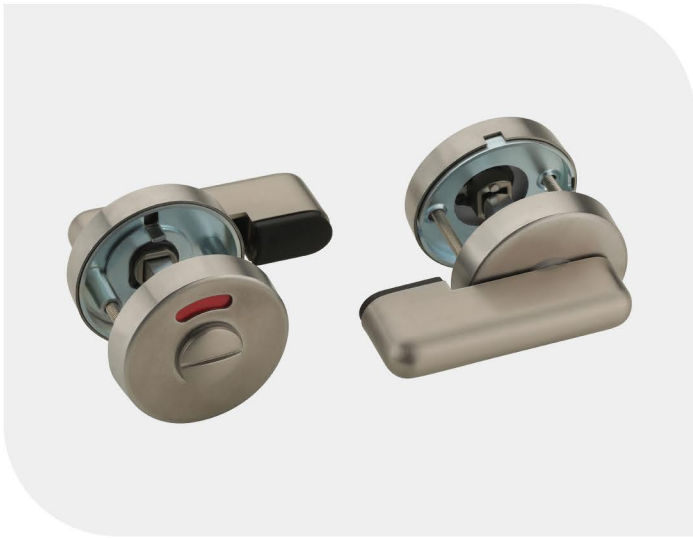
KY LOCK BODY

MATERIAL : MS

| Finish | 55MM |
|--------|--------|
| GLOSSY | 490.00 |

Features : Universal for right & left handed, Inside of outside opening door with door thickness from 30 to 60 mm
 Suitable for : Residential main door, safety doors, bedroom doors, passage doors, storeroom doors, office doors, hotelrooms

INDICATOR LCK



INDICATOR LATCH 1

MATERIAL : SS 304

Finish

SS

50MM OD

761.00



INDICATOR LATCH 2

MATERIAL : SS 304

Finish

SS

50MM OD

848.00



DEAD LOCK FOR INDICATOR LOCK

MATERIAL : BRASS + MS

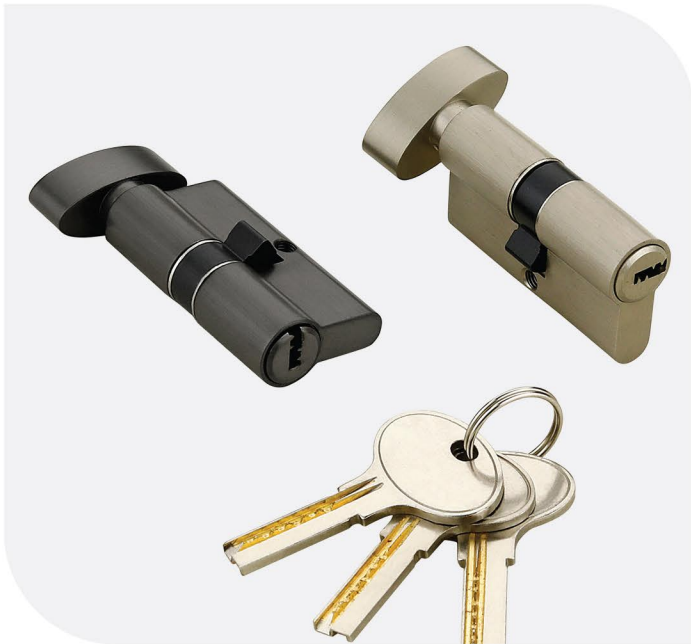
Finish

SS

55MM

598.00





KNOB AND KEY (KNK) MATERIAL : BRASS

| Finish | 60MM | 70MM | 80MM | 90MM | 2 KEY Ex. |
|--------|---------|---------|---------|---------|-----------|
| SS | 1034.00 | 1137.00 | 1232.00 | 1331.00 | 209.00 |
| BA | 1112.00 | 1216.00 | 1309.00 | 1409.00 | 209.00 |
| RG/BM | 1226.00 | 1331.00 | 1435.00 | 1592.00 | 209.00 |



BOTH SIDE KEY (BSK) MATERIAL : BRASS

| Finish | 60MM | 70MM | 2 KEY Ex. |
|--------|---------|---------|-----------|
| SS | 940.00 | 1034.00 | 209.00 |
| BA | 1017.00 | 1112.00 | 209.00 |
| RG/BM | 1122.00 | 1226.00 | 209.00 |



COIN CYLINDER MATERIAL : BRASS

| Finish | 60MM | 70MM |
|--------|---------|---------|
| SS | 840.00 | 940.00 |
| BA | 919.00 | 1017.00 |
| RG/BM | 1017.00 | 1122.00 |



HALF CYLINDER MATERIAL : BRASS

| Finish | 40MM | 45MM |
|--------|---------|---------|
| SS | 815.00 | 862.00 |
| BA | 892.00 | 940.00 |
| RG/BM | 1054.00 | 1112.00 |

| Recommended Door Thickness | Cylinder Length | 60MM | 70MM | 80MM | 90MM |
|----------------------------|-----------------|------------|------------|------------|------------|
| | Door Thickness | 32 to 38MM | 39 to 48MM | 49 to 58MM | 59 to 68MM |

RIM LOCK



TRIBOLT

MATERIAL : BRASS + MS

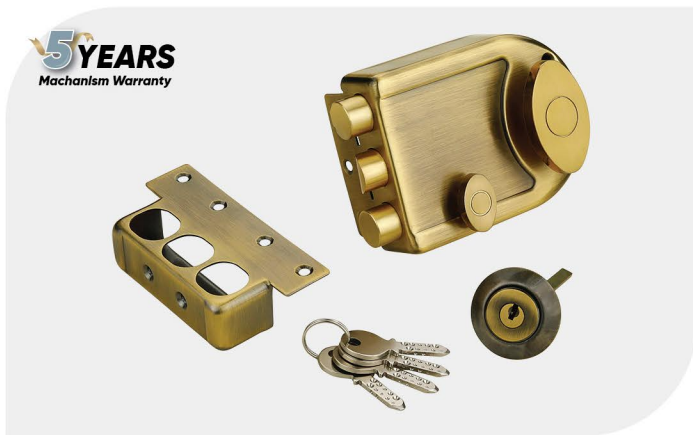
| Finish | M.R.P. | Mechanism |
|--------|---------|----------------|
| SS | 3606.00 | Knob on Inside |
| BA | 3689.00 | 3 Deadbolts |



TRIBOLT 2CK

MATERIAL : BRASS + MS

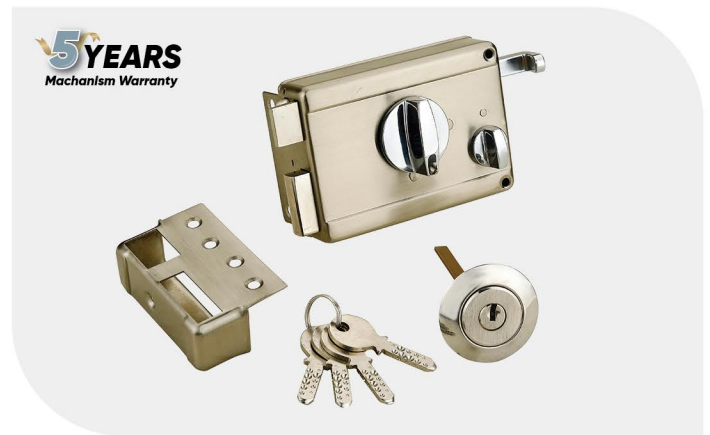
| Finish | M.R.P. | Mechanism |
|--------|---------|--------------------------------|
| SS | 4791.00 | Lockable Lock • Knob in inside |
| BA | 4848.00 | 3 Dead bolts |



PRM. TRIBOLT

MATERIAL : BRASS + MS

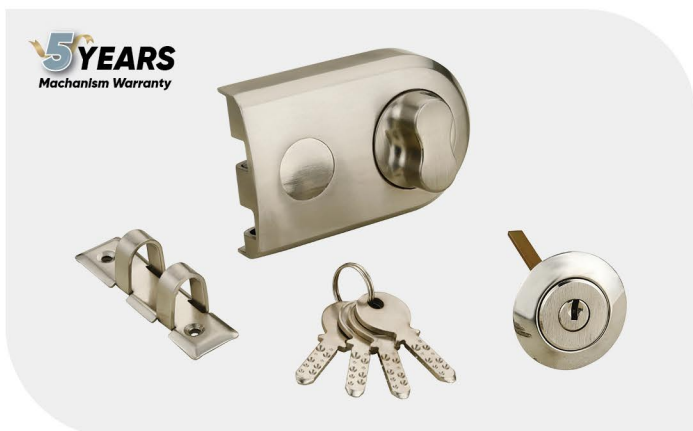
| Finish | M.R.P. | Mechanism |
|--------|---------|--|
| SS | 4405.00 | Knob on inside : |
| BA | 4472.00 | 2 Deadbolts + 1 Latchbolt Auto closing reversible latchbolt |



NIGHT LATCH

MATERIAL : BRASS + MS

| Finish | M.R.P. | Mechanism |
|--------|---------|-------------------------------|
| SS | 2839.00 | Knob on inside : Auto closing |
| BA | 2891.00 | latchbolt with safety knob |



JIMMYPROOF VERTIBOLT

MATERIAL : ZINC

| Finish | M.R.P. | Mechanism |
|--------|---------|-------------------------|
| SS | 2949.00 | Knob on inside : |
| BA | 3006.00 | 2 Vertical locking bolt |



TRIBOLT SQUARE

MATERIAL : BRASS + SS304

| Finish | M.R.P. | Mechanism |
|--------|---------|------------------|
| SS | 3636.00 | Knob on inside : |
| BA | 3760.00 | 3 Deadbolts |

2 YEARS
Mechanism Warranty



SDC-101 NANO

MATERIAL : ALUMINIUM

| Finish | M.R.P. | Door Weight | Door Width |
|-------------|---------|-------------|------------|
| Silver/Grey | 1523.00 | 40-60 KG | 850/950 MM |

2 YEARS
Mechanism Warranty



SDC-1001 ECO

MATERIAL : ALUMINIUM

| Finish | M.R.P. | Door Weight | Door Width |
|-------------|---------|-------------|------------|
| Silver/Grey | 1740.00 | 40-60 KG | 850/950 MM |

2 YEARS
Mechanism Warranty



SDC-1002 REGULAR

MATERIAL : ALUMINIUM

| Finish | M.R.P. | Door Weight | Door Width |
|-------------|---------|-------------|------------|
| Silver/Grey | 1964.00 | 70-80 KG | 1100 MM |

2 YEARS
Mechanism Warranty



SDC-1003 DELUX COVER

MATERIAL : ALUMINIUM

| Finish | M.R.P. | Door Weight | Door Width |
|--------|---------|-------------|--------------|
| Silver | 2642.00 | 100-120 KG | 1100/1250 MM |
| BA | 2842.00 | 100-120 KG | 1100/1250 MM |

DOOR CLOSER

2 YEARS
Mechanism Warranty



SDC-1004 DELUX
MATERIAL : ALUMINIUM

| Finish | M.R.P. | Door Weight | Door Width |
|-------------|---------|-------------|--------------|
| Silver/Grey | 2542.00 | 100-120 KG | 1250/1400 MM |

2 YEARS
Mechanism Warranty



SDC-1005 DELUX PELMET ARM
MATERIAL : ALUMINIUM

| Finish | M.R.P. | Door Weight | Door Width |
|-------------|---------|-------------|--------------|
| Silver/Grey | 3323.00 | 100-120 KG | 1250/1400 MM |

2 YEARS
Mechanism Warranty



SDC-1006 CONCEAL
MATERIAL : ALUMINIUM

| Finish | M.R.P. | Door Weight | Door Width |
|--------|---------|-------------|-------------|
| Silver | 5042.00 | 70-80 KG | 950/1100 MM |



JADE

MATERIAL : ZINC

| | Finish | 96MM |
|-----------|--------------|---------|
| 2 NOS | CP/BA/CA | 1927.00 |
| Set Price | GG/RG/BM/ZBM | 2238.00 |



CONVEX

MATERIAL : ZINC

| | Finish | 32MM | 64MM |
|-----------|--------------|---------|---------|
| 2 NOS | CP/SS/BA/CA | 2133.00 | 3963.00 |
| Set Price | GG/RG/BM/ZBM | 2475.00 | 4598.00 |



ELITE

MATERIAL : ZINC

| | Finish | 192MM |
|-----------|--------------|---------|
| 2 NOS | SSCP/BA/CA | 2144.00 |
| Set Price | GG/RG/BM/ZBM | 2487.00 |

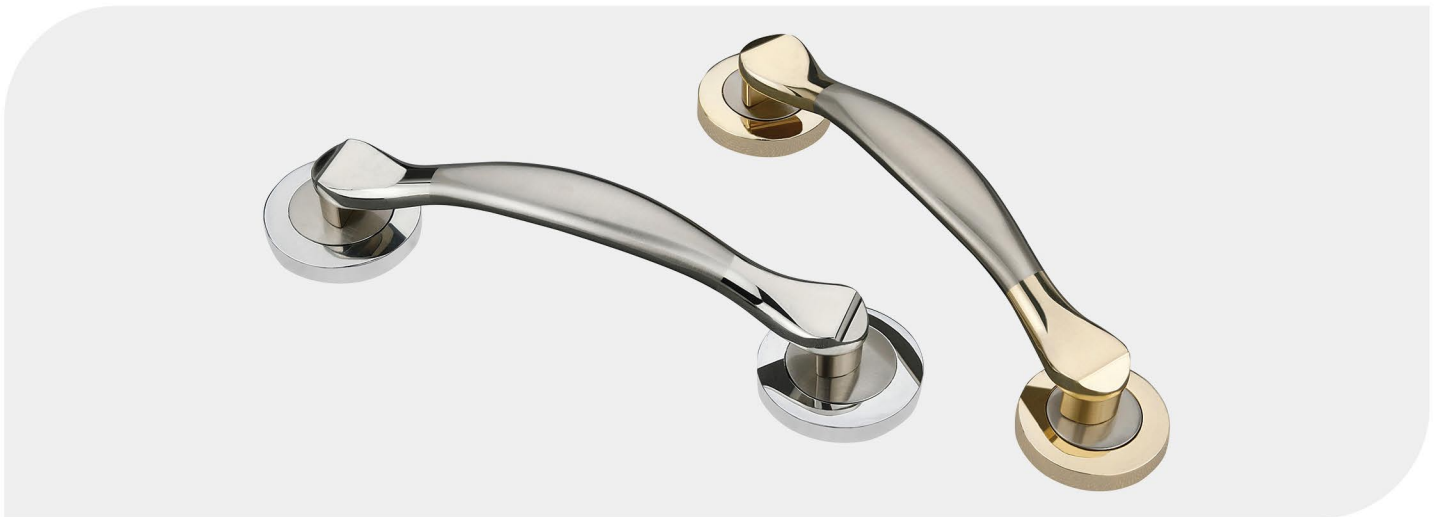
PULL SERIES



GOTTY

MATERIAL : ZINC

| | Finish | 160MM |
|-----------|------------------|---------|
| 2 NOS | SSCP/BA/CA | 1971.00 |
| Set Price | GTT/SG/RG/BM/ZBM | 2286.00 |



HIPPO

MATERIAL : ZINC

| | Finish | 160MM |
|-----------|------------------|---------|
| 2 NOS | STT/BA/CA | 1885.00 |
| Set Price | GTT/SG/RG/BM/ZBM | 2188.00 |



HERRY

MATERIAL : ZINC

| | Finish | 160MM |
|-----------|--------------|---------|
| 2 NOS | SSCP/BA/CA | 2069.00 |
| Set Price | GG/RG/BM/ZBM | 2400.00 |



CERRY
MATERIAL : ZINC

| | Finish | 160MM |
|-----------|--------------|---------|
| 2 NOS | SSCP/BA/CA | 2081.00 |
| Set Price | GG/RG/BM/ZBM | 2415.00 |



ROME
MATERIAL : ZINC

| | Finish | 185MM |
|-----------|--------------|---------|
| 2 NOS | CP/SS/BA/CA | 2498.00 |
| Set Price | GG/RG/BM/ZBM | 2901.00 |



NEXA
MATERIAL : ZINC

| | Finish | 175MM |
|-----------|--------------|---------|
| 2 NOS | CP/SS/BA/CA | 2373.00 |
| Set Price | GG/RG/BM/ZBM | 2756.00 |

MDH SERIES



MDH-01

MATERIAL : ZINC

| | Finish | 200MM | 300MM | 450MM |
|-----------|--------------|---------|---------|---------|
| 2 NOS | CP/SS/BA/CA | 2994.00 | 4130.00 | 6039.00 |
| Set Price | GG/RG/BM/ZBM | 3335.00 | 4599.00 | 6723.00 |



MDH-02

MATERIAL : ZINC

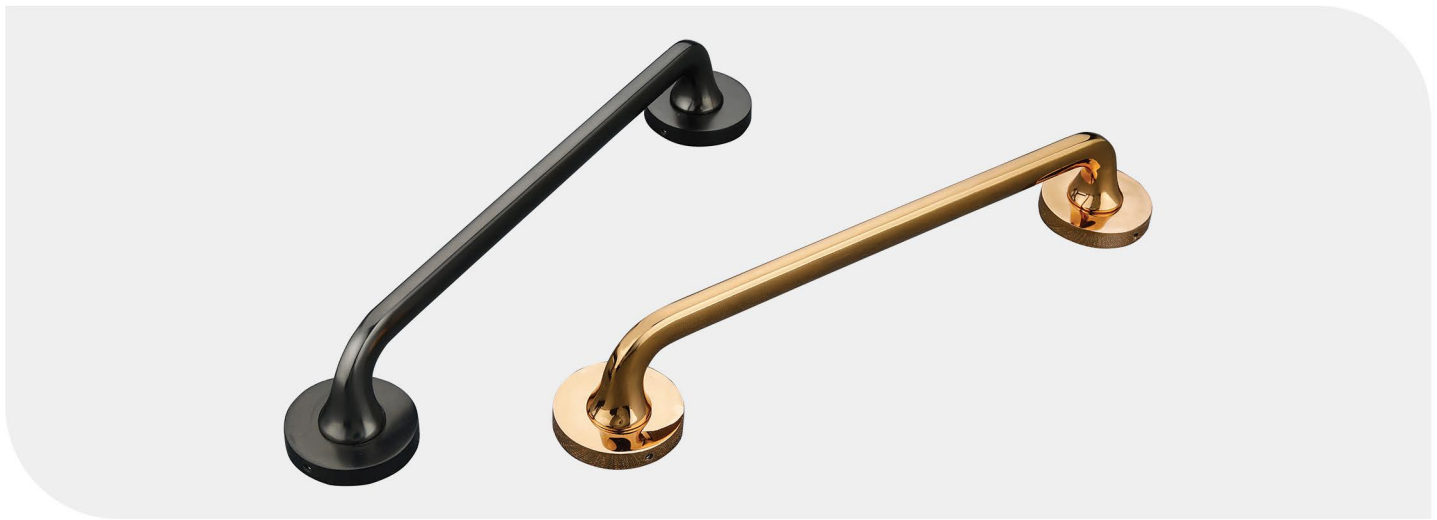
| | Finish | 200MM | 300MM | 450MM |
|-----------|--------------|---------|---------|---------|
| 2 NOS | CP/SS/BA/CA | 2725.00 | 3701.00 | 5386.00 |
| Set Price | GG/RG/BM/ZBM | 3034.00 | 4120.00 | 5997.00 |



MDH-03

MATERIAL : ZINC

| | Finish | 200MM | 300MM | 450MM |
|-----------|--------------|---------|---------|---------|
| 2 NOS | CP/SS/BA/CA | 4068.00 | 4691.00 | 5758.00 |
| Set Price | GG/RG/BM/ZBM | 4718.00 | 5443.00 | 6678.00 |



MDH-04

MATERIAL : ZINC

| | Finish | 200MM | 300MM | 450MM |
|-----------|--------------|---------|---------|---------|
| 2 NOS | CP/SS/BA/CA | 3418.00 | 4078.00 | 4913.00 |
| Set Price | GG/RG/BM/ZBM | 3966.00 | 4731.00 | 5700.00 |



MDH-05

MATERIAL : ZINC

| | Finish | 160MM | 288MM | 416MM |
|-----------|--------------|---------|---------|---------|
| 2 NOS | SSCP/BA/CA | 3420.00 | 4060.00 | 5862.00 |
| Set Price | GG/RG/BM/ZBM | 3968.00 | 4709.00 | 6800.00 |



MDH-06

MATERIAL : ZINC

| | Finish | 224MM | 450MM |
|-----------|-------------|---------|---------|
| 2 NOS | SSCP/BA/CA | 5140.00 | 6750.00 |
| Set Price | GTT/RG/BMTT | 5962.00 | 7829.00 |

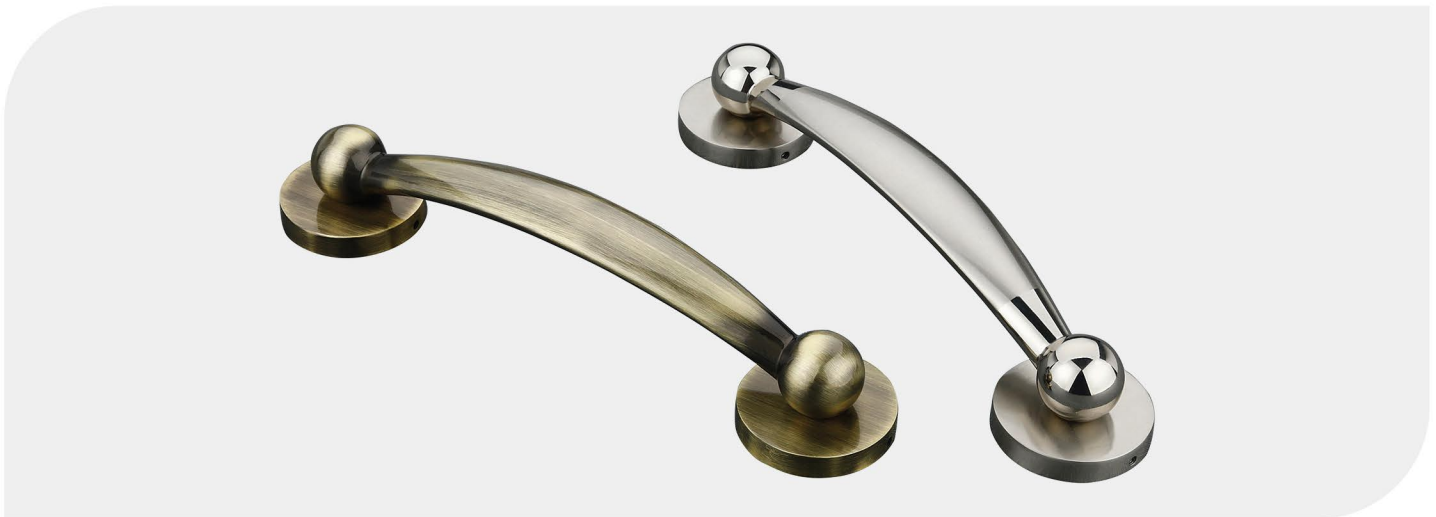
MDH SERIES



MDH-07

MATERIAL : ZINC

| | Finish | 224MM | 450MM |
|-----------|--------------|---------|---------|
| 2 NOS | SSCP/BA/CA | 4198.00 | 6991.00 |
| Set Price | GG/RG/BM/ZBM | 4870.00 | 8110.00 |



MDH-08

MATERIAL : ZINC

| | Finish | 224MM | 450MM |
|-----------|---------------|---------|---------|
| 2 NOS | STT/BA/CA | 4188.00 | 6174.00 |
| Set Price | GTT/RG/BM/ZBM | 4860.00 | 7161.00 |



MDH-09

MATERIAL : ZINC

| | Finish | 200MM | 300MM |
|-----------|-----------------------|---------|---------|
| 2 NOS | CPTT/CP Col. | 4350.00 | 5217.00 |
| Set Price | GTT/ZBMGG/BMTT/ZBMSil | 5047.00 | 6052.00 |



MDH-10

MATERIAL : ZINC

| | Finish | 300MM | 450MM |
|-----------|------------------------|---------|---------|
| 2 NOS | SSCP/BA/CA | 5351.00 | 6824.00 |
| Set Price | GTT/ZBMGG/BMTT/ZBM.Sil | 5959.00 | 7600.00 |



OD 32MM

MDH-11

MATERIAL : ALUMINIUM

| Finish | 200MM | 300MM | 450MM | 600MM |
|------------------------|---------|---------|---------|---------|
| SSCP/BA | 5129.00 | 5623.00 | 6364.00 | 7106.00 |
| SG/ZBMGG/BGGG/BG/ZBMBG | 5785.00 | 6353.00 | 7206.00 | 8059.00 |

2 NOS Set Price



OD 32MM

MDH-12



OD 32MM

MDH-13

| | Finish | 200MM | 300MM | 450MM | 600MM |
|-----------|------------------------|---------|---------|---------|---------|
| 2 NOS | SSCP/BA | 5611.00 | 6107.00 | 6849.00 | 7590.00 |
| Set Price | SG/ZBMGG/BGGG/BG/ZBMBG | 6341.00 | 6909.00 | 7762.00 | 8616.00 |

MATERIAL : ALUMINIUM

MDH SERIES



OD
26MM

MDH-14

MATERIAL : ALUMINIUM

| Finish | 200MM | 300MM | 450MM | 600MM |
|------------------------|---------|---------|---------|---------|
| SSCP/BA | 4332.00 | 4698.00 | 5247.00 | 5795.00 |
| SG/ZBMGG/BGGG/BG/ZBMBG | 4870.00 | 5291.00 | 5920.00 | 6551.00 |

2 NOS Set Price



OD
25MM

MDH-15

MATERIAL : ALUMINIUM

| Finish | 300MM | 450MM | 600MM |
|---------------|---------|---------|---------|
| SSCP/BABM | 5122.00 | 5516.00 | 5906.00 |
| ZBMBG/GMGG/RG | 5622.00 | 6036.00 | 6446.00 |

2 NOS
Set Price



MDH-16

MATERIAL : ALUMINIUM

| Finish | 300MM | 450MM | 600MM |
|-----------|---------|---------|---------|
| SS | 4322.00 | 5324.00 | 6351.00 |
| BA/ZBM/GM | 4895.00 | 6106.00 | 7316.00 |

2 NOS
Set Price



MDH-17

MATERIAL : ALUMINIUM+WOOD

2 NOS
Set Price

| Finish | 300MM | 450MM | 600MM |
|-----------|---------|---------|---------|
| SS/BA | 3558.00 | 4667.00 | 5811.00 |
| ZBM/GM/RG | 4058.00 | 5187.00 | 6351.00 |



MDH-18

MATERIAL : ZINC + ALUMINIUM

2 NOS
Set Price

| Finish | 250MM | 450MM | 600MM |
|-------------|---------|---------|---------|
| SSCP | 3575.00 | 4880.00 | 5882.00 |
| BA/ZBM/GMGG | 3930.00 | 5366.00 | 6471.00 |



MDH-19

MATERIAL : AL.+WOOD

2 NOS
Set Price

| Finish | 300MM | 450MM | 600MM | 900MM |
|-----------|---------|---------|---------|---------|
| SS/BA | 2981.00 | 3510.00 | 4320.00 | 5122.00 |
| ZBM/GM/RG | 3481.00 | 4030.00 | 4860.00 | 5682.00 |

MDH SERIES



OD
25MM

MDH-20

MATERIAL : AL.+WOOD

| | Finish | 300MM | 450MM | 600MM |
|-----------|-----------|---------|---------|---------|
| 2 NOS | SS/BA | 4320.00 | 5486.00 | 6699.00 |
| Set Price | ZBM/GM/RG | 4820.00 | 6006.00 | 7239.00 |



OD
25MM

MDH-21

MATERIAL : ALUMINIUM

| | Finish | 300MM | 450MM | 600MM |
|-----------|--------|---------|---------|---------|
| 2 NOS | SS | 5339.00 | 6785.00 | 8267.00 |
| Set Price | BA/ZBM | 5845.00 | 7311.00 | 8919.00 |



25X25

MDH-22

MATERIAL : AL.+WOOD

| | Finish | 300MM | 450MM | 600MM | 900MM |
|-----------|-----------|---------|---------|---------|----------|
| 2 NOS | SS/BA | 4671.00 | 6075.00 | 7475.00 | 10287.00 |
| Set Price | ZBM/GM/RG | 5171.00 | 6595.00 | 8015.00 | 10847.00 |



ALPINE

MATERIAL : ZINC

| Finish | 96MM | 160MM | 224MM | 288MM |
|-----------------|--------|--------|--------|---------|
| CP/SS/BA/CA | 256.00 | 446.00 | 755.00 | 903.00 |
| GG/RG/BG/BM/ZBM | 297.00 | 528.00 | 910.00 | 1086.00 |



ACTIVE

MATERIAL : ZINC

| Finish | 64MM | 96MM | 128MM | 160MM |
|-----------------|--------|--------|--------|--------|
| CP/SS/BA/CA | 145.00 | 175.00 | 222.00 | 276.00 |
| GG/RG/BG/BM/ZBM | 189.00 | 232.00 | 306.00 | 382.00 |



ALIVE

MATERIAL : ZINC

| Finish | 96MM | 160MM | 224MM | 288MM |
|-----------------|--------|--------|--------|--------|
| CP/SS/BA/CA | 229.00 | 366.00 | 581.00 | 743.00 |
| GG/RG/BG/BM/ZBM | 271.00 | 449.00 | 736.00 | 924.00 |



AUDI

MATERIAL : ZINC

| Finish | 96MM | 160MM | 224MM | 288MM |
|-----------------|--------|--------|--------|--------|
| CP/STT/BA/CA | 219.00 | 341.00 | 559.00 | 653.00 |
| GG/SG/RG/BG/ZBM | 261.00 | 423.00 | 715.00 | 833.00 |



AXE

MATERIAL : ZINC

| Finish | 64MM | 96MM | 128MM |
|-----------------|--------|--------|--------|
| CP/SS/BA/CA | 152.00 | 179.00 | 239.00 |
| GG/RG/BG/BM/ZBM | 184.00 | 219.00 | 301.00 |



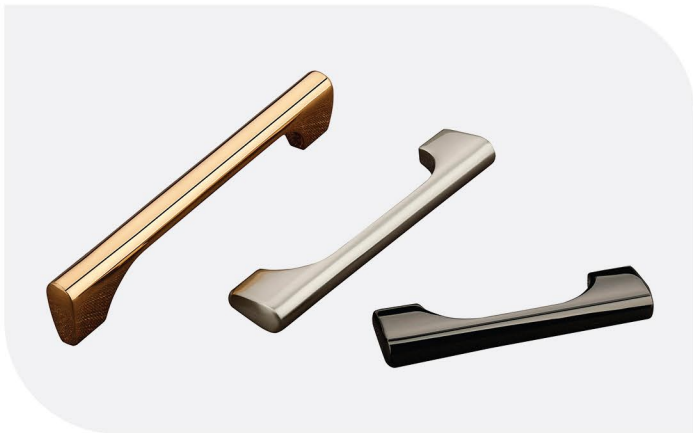
CABINET SERIES



BIRANI

MATERIAL : ZINC

| Finish | 64MM | 96MM | 128MM | 160MM | 192MM | 224MM |
|--------------------------|--------|--------|--------|--------|--------|--------|
| CP/CP.TT/S.S/BA/CA | 159.00 | 209.00 | 254.00 | 349.00 | 523.00 | 613.00 |
| G.TT/S.G/R.G/B.G/B.M/ZBM | 189.00 | 251.00 | 316.00 | 431.00 | 651.00 | 768.00 |



CELLO

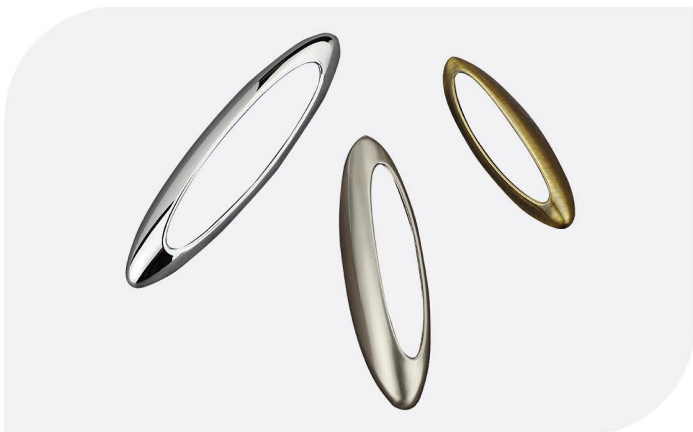
MATERIAL : ZINC

| Finish | 96MM | 128MM | 160MM | 224MM | 288MM |
|-----------------|--------|--------|--------|--------|--------|
| CP/SS/BA/CA | 266.00 | 332.00 | 419.00 | 763.00 | 775.00 |
| GG/RG/BG/BM/ZBM | 319.00 | 407.00 | 519.00 | 950.00 | 989.00 |

CAGE

MATERIAL : ZINC

| Finish | 96MM | 160MM | 256MM | 320MM |
|-----------------------|--------|--------|---------|---------|
| SSCP/BA/CA | 379.00 | 504.00 | 731.00 | 1035.00 |
| GTT/ZBMGG/BMTT/ZBMSII | 453.00 | 616.00 | 1211.00 | 1483.00 |



CIPLA

MATERIAL : ZINC

| Finish | 64MM | 96MM | 128MM | 160MM |
|-----------------|--------|--------|--------|--------|
| CP/SS/BA/CA | 124.00 | 185.00 | 252.00 | 334.00 |
| GG/RG/BG/BM/ZBM | 154.00 | 225.00 | 314.00 | 418.00 |

CITY

MATERIAL : ZINC

| Finish | 96MM | 128MM | 160MM | 224MM |
|-----------------|--------|--------|--------|--------|
| CP/SS/BA/CA | 219.00 | 277.00 | 326.00 | 536.00 |
| GG/RG/BG/BM/ZBM | 271.00 | 351.00 | 423.00 | 715.00 |



DECENT

MATERIAL : ZINC

| Finish | 64MM | 96MM | 128MM | 160MM |
|------------------|--------|--------|--------|--------|
| CP/STT/BA/CA | 135.00 | 177.00 | 234.00 | 301.00 |
| GTT/SG/BG/BM/ZBM | 167.00 | 217.00 | 296.00 | 382.00 |



DIN

MATERIAL : ZINC

| Finish | 96MM | 128MM | 160MM |
|-----------------|--------|--------|--------|
| CP/SS/BA/CA | 230.00 | 292.00 | 356.00 |
| GG/RG/BG/BM/ZBM | 282.00 | 367.00 | 454.00 |



EARVIN

MATERIAL : ZINC

| Finish | 96MM | 160MM | 288MM |
|-----------------|--------|--------|--------|
| CP/SS/BA/CA | 199.00 | 309.00 | 574.00 |
| GG/RG/BG/BM/ZBM | 239.00 | 392.00 | 755.00 |



FANTA

MATERIAL : ZINC

| Finish | 64MM | 96MM | 128MM |
|-----------------|--------|--------|--------|
| CP/SS/BA/CA | 125.00 | 159.00 | 209.00 |
| GG/RG/BG/BM/ZBM | 155.00 | 199.00 | 271.00 |



FLAT

MATERIAL : ZINC

| Finish | 96MM | 128MM | 160MM | 224MM |
|-----------------|--------|--------|--------|--------|
| CP/SS/BA/CA | 222.00 | 282.00 | 387.00 | 569.00 |
| GG/RG/BG/BM/ZBM | 264.00 | 344.00 | 471.00 | 725.00 |

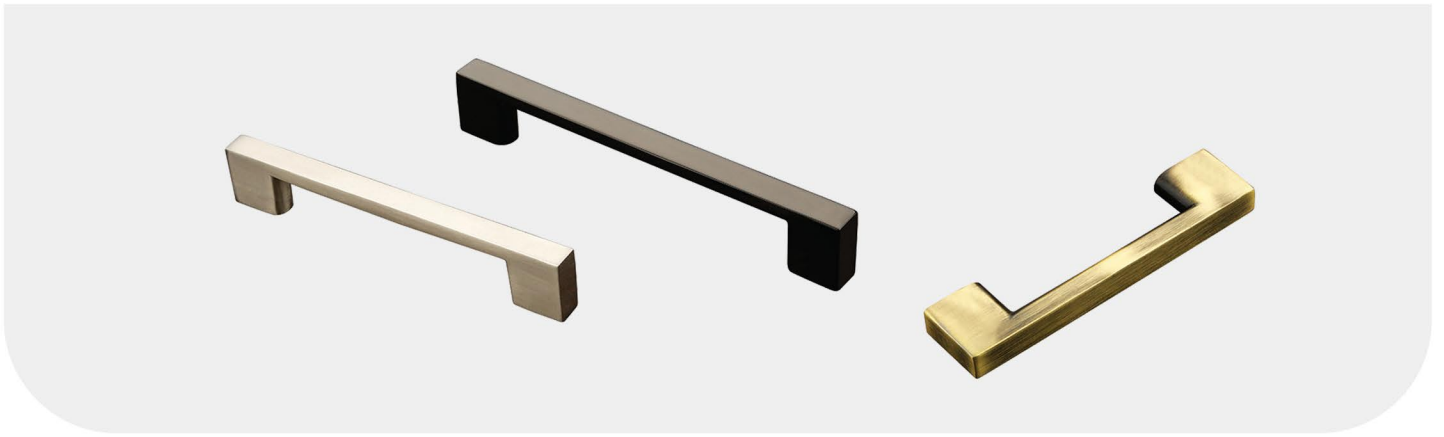


HEXA

MATERIAL : ZINC

| Finish | 96MM | 160MM | 224MM |
|-----------------|--------|--------|--------|
| CP/SS/BA/CA | 185.00 | 309.00 | 463.00 |
| GG/RG/BG/BM/ZBM | 227.00 | 391.00 | 618.00 |

CABINET SERIES



HY-SQUARE

MATERIAL : ZINC

| Finish | 96MM | 128MM | 160MM | 224MM | 288MM |
|-----------------|--------|--------|--------|--------|---------|
| CP/SS/BA/CA | 296.00 | 386.00 | 533.00 | 777.00 | 898.00 |
| GG/RG/BG/BM/ZBM | 349.00 | 466.00 | 640.00 | 965.00 | 1117.00 |



IDEAL

MATERIAL : ZINC

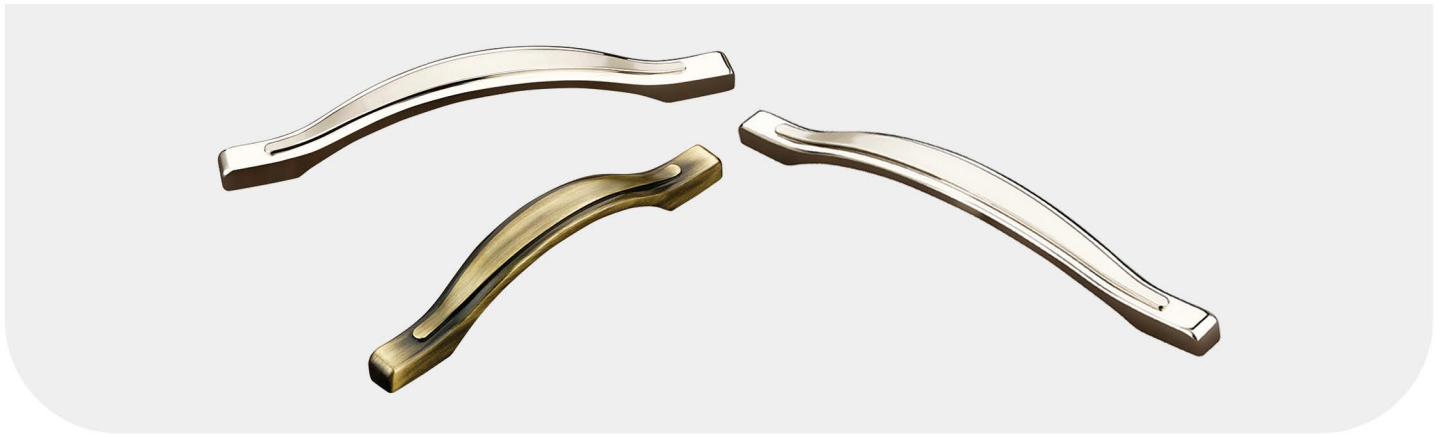
| Finish | 96MM | 128MM | 160MM | 224MM | 288MM |
|---------------------|--------|--------|--------|--------|--------|
| CP/STT/BA/CA | 240.00 | 289.00 | 379.00 | 616.00 | 800.00 |
| GTT/SG/RG/BG/BM/ZBM | 282.00 | 351.00 | 461.00 | 772.00 | 980.00 |



JEMS

MATERIAL : ZINC

| Finish | 64MM | 96MM | 128MM | 160MM | 192MM | 224MM |
|-----------------|--------|--------|--------|--------|--------|--------|
| CP/SS/BA/CA | 135.00 | 165.00 | 230.00 | 304.00 | 438.00 | 488.00 |
| GG/RG/BG/BM/ZBM | 172.00 | 214.00 | 302.00 | 399.00 | 586.00 | 665.00 |



JETLY

MATERIAL : ZINC

| Finish | 64MM | 96MM | 128MM | 160MM | 224MM |
|---------------------|--------|--------|--------|--------|--------|
| CP/STT/BA/CA | 149.00 | 209.00 | 267.00 | 341.00 | 585.00 |
| GTT/SG/RG/BG/BM/ZBM | 187.00 | 259.00 | 341.00 | 439.00 | 765.00 |



JAGUAR

MATERIAL : ZINC

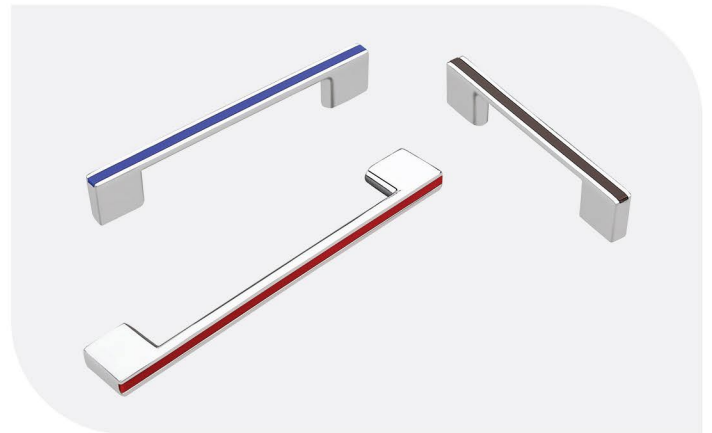
| Finish | 96MM | 160MM | 288MM |
|-----------------|--------|--------|---------|
| CP/SS/BA/CA | 262.00 | 367.00 | 858.00 |
| GG/RG/BG/BM/ZBM | 304.00 | 449.00 | 1039.00 |



JENNY

MATERIAL : ZINC

| Finish | 64MM | 96MM | 128MM |
|---------------------|--------|--------|--------|
| CP/STT/BA/CA | 137.00 | 182.00 | 242.00 |
| GTT/SG/RG/BG/BM/ZBM | 174.00 | 230.00 | 314.00 |



JERRY

MATERIAL : ZINC

| Finish | 96MM | 128MM | 160MM | 224MM |
|---|--------|--------|--------|--------|
| CP.COLOUR | 264.00 | 311.00 | 382.00 | 518.00 |
| WHITE • BROWN • RED • BLUE • BLACK • GREEN • GOLD | | | | |



LEAF

MATERIAL : ZINC

| Finish | 96MM | 128MM | 160MM | 224MM |
|---------------------|--------|--------|--------|--------|
| CP/STT/BA/CA | 224.00 | 301.00 | 364.00 | 551.00 |
| GTT/SG/RG/BG/BM/ZBM | 266.00 | 362.00 | 446.00 | 706.00 |

CABINET SERIES



LOGAN

MATERIAL : ZINC

| Finish | 64MM | 96MM | 128MM |
|------------------|--------|--------|--------|
| CP/SS/BA/CA | 130.00 | 165.00 | 222.00 |
| GTT/RG/BG/BM/ZBM | 172.00 | 220.00 | 304.00 |



LIZA

MATERIAL : ZINC

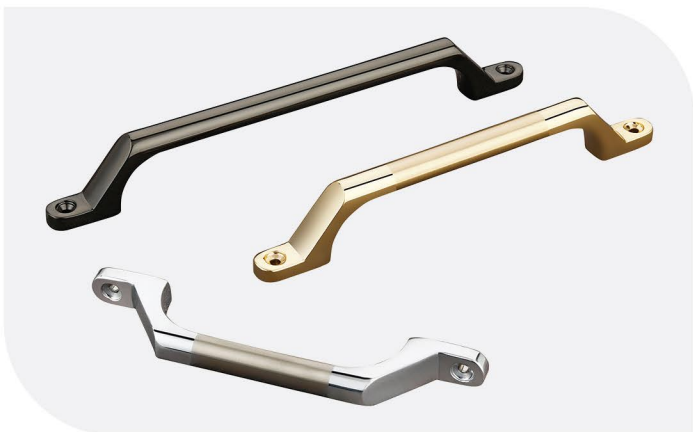
| Finish | 96MM | 160MM | 224MM | 288MM |
|-----------------|--------|--------|--------|--------|
| CP/SS/BA/CA | 214.00 | 357.00 | 590.00 | 783.00 |
| GG/RG/BG/BM/ZBM | 256.00 | 441.00 | 743.00 | 964.00 |



MARSHAL

MATERIAL : ZINC

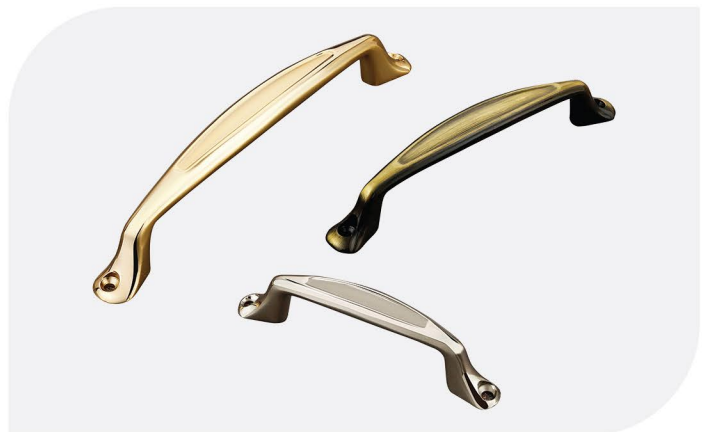
| Finish | 64MM | 96MM | 128MM | 160MM | 192MM | 224MM |
|---------------------|--------|--------|--------|--------|--------|--------|
| CP/SS/STT/BA/CA | 114.00 | 150.00 | 225.00 | 286.00 | 401.00 | 443.00 |
| GTT/SG/RG/BG/BM/ZBM | 155.00 | 205.00 | 307.00 | 394.00 | 566.00 | 636.00 |



MAGIC

MATERIAL : ZINC

| Finish | 64MM | 96MM | 128MM | 160MM |
|---------------------|--------|--------|--------|--------|
| CP/SS/STT/BA/CA | 192.00 | 229.00 | 282.00 | 339.00 |
| GTT/SG/RG/BG/BM/ZBM | 224.00 | 271.00 | 344.00 | 423.00 |



MEGI

MATERIAL : ZINC

| Finish | 64MM | 96MM | 128MM | 160MM |
|--------------|--------|--------|--------|--------|
| Sil./BA/CA | 119.00 | 165.00 | 247.00 | 349.00 |
| GM/BG/BM/ZBM | 155.00 | 214.00 | 321.00 | 446.00 |



MELODY

MATERIAL : ZINC

| Finish | 64MM | 96MM | 128MM |
|---------------------|--------|--------|--------|
| CP/STT/BA/CA | 112.00 | 164.00 | 261.00 |
| GTT/SG/RG/BG/BM/ZBM | 149.00 | 212.00 | 332.00 |



N.AISHWARYA

MATERIAL : ZINC

| Finish | 64MM | 96MM | 128MM | 160MM |
|------------|--------|--------|--------|--------|
| Sil./BA/CA | 109.00 | 160.00 | 257.00 | 364.00 |
| GM/BG/ZBM | 145.00 | 209.00 | 329.00 | 463.00 |



NEW MEGI

MATERIAL : ZINC

| Finish | 64MM | 96MM | 128MM | 160MM |
|---------------------|--------|--------|--------|--------|
| STT/BA/CA | 139.00 | 184.00 | 247.00 | 336.00 |
| GTT/SG/RG/BG/BM/ZBM | 182.00 | 240.00 | 332.00 | 449.00 |



NIKON

MATERIAL : ZINC

| Finish | 96MM | 128MM | 160MM |
|--------------|--------|--------|--------|
| CPSil./BROWN | 220.00 | 282.00 | 386.00 |



NEW SQUARE

MATERIAL : ZINC

| Finish | 64MM | 96MM | 128MM | 160MM | 192MM | 224MM | 288MM |
|-----------------|--------|--------|--------|--------|--------|--------|--------|
| CP/SS/BA/CA | 194.00 | 229.00 | 271.00 | 336.00 | 404.00 | 448.00 | 518.00 |
| GG/RG/BG/BM/ZBM | 244.00 | 291.00 | 356.00 | 449.00 | 569.00 | 643.00 | 746.00 |

CABINET SERIES



N.CELLO

MATERIAL : ZINC

| Finish | 96MM | 160MM | 224MM | 288MM |
|---------------------|--------|--------|--------|--------|
| CP/S.S/B.A/C.A | 224.00 | 369.00 | 590.00 | 752.00 |
| G.G/R.G/B.G/B.M/ZBM | 266.00 | 451.00 | 745.00 | 934.00 |



N.SCODA

MATERIAL : ZINC

| Finish | 96MM | 128MM | 160MM | 224MM |
|---------------------|--------|--------|--------|--------|
| CP/S.S/B.A/C.A | 230.00 | 332.00 | 433.00 | 701.00 |
| G.G/R.G/B.G/B.M/ZBM | 272.00 | 396.00 | 514.00 | 857.00 |



PAJERO

MATERIAL : ZINC

| Finish | 64MM | 96MM | 128MM | 160MM |
|--------------------|--------|--------|--------|--------|
| CP/SS/BA/CA | 192.00 | 267.00 | 299.00 | 376.00 |
| GG/SG/RG/BG/BM/ZBM | 230.00 | 321.00 | 374.00 | 474.00 |



RACKON

MATERIAL : ZINC

| Finish | 96MM | 128MM | 160MM | 224MM |
|---------------------|--------|--------|--------|--------|
| CP/SS/STT/BA/CA | 214.00 | 287.00 | 361.00 | 554.00 |
| GTT/SG/RG/BG/BM/ZBM | 264.00 | 362.00 | 458.00 | 733.00 |



STEPIC

MATERIAL : ZINC

| Finish | 96MM | 160MM | 224MM | 288MM |
|-----------------|--------|--------|--------|--------|
| CP/STT/BA/CA | 257.00 | 386.00 | 590.00 | 716.00 |
| GG/RG/BG/BM/ZBM | 299.00 | 469.00 | 743.00 | 897.00 |



SCODA

MATERIAL : ZINC

| Finish | 96MM | 128MM | 160MM | 224MM |
|-----------------|--------|--------|--------|--------|
| CP/SS/BA/CA | 195.00 | 266.00 | 339.00 | 588.00 |
| GG/RG/BG/BM/ZBM | 256.00 | 351.00 | 453.00 | 797.00 |



SEDAN

MATERIAL : ZINC

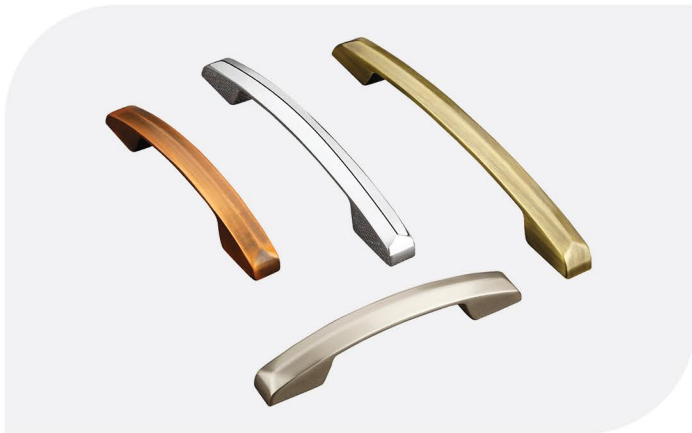
| Finish | 96MM | 128MM | 160MM | 224MM |
|-----------------|--------|--------|--------|--------|
| CP/SS/BA/CA | 244.00 | 292.00 | 391.00 | 638.00 |
| GG/RG/BG/BM/ZBM | 284.00 | 354.00 | 474.00 | 792.00 |



SPICE

MATERIAL : ZINC

| Finish | 96MM | 160MM | 224MM | 288MM |
|-----------------|--------|--------|--------|--------|
| CP/SS/BA/CA | 220.00 | 339.00 | 519.00 | 676.00 |
| GG/RG/BG/BM/ZBM | 262.00 | 421.00 | 675.00 | 857.00 |



STALING

MATERIAL : ZINC

| Finish | 96MM | 128MM | 160MM | 224MM | 288MM |
|-----------------|--------|--------|--------|--------|---------|
| CP/SS/BA/CA | 292.00 | 357.00 | 423.00 | 725.00 | 965.00 |
| GG/RG/BG/BM/ZBM | 334.00 | 419.00 | 506.00 | 878.00 | 1146.00 |



TRACK

MATERIAL : ZINC

| Finish | 64MM | 96MM | 128MM |
|---------------------|--------|--------|--------|
| CP/STT/BA/CA | 147.00 | 180.00 | 232.00 |
| GTT/SG/RG/BG/BM/ZBM | 190.00 | 239.00 | 316.00 |



UNIQUE

MATERIAL : ZINC

| Finish | 96MM | 128MM | 160MM | 224MM |
|-----------------|--------|--------|--------|--------|
| CP/SS/BA/CA | 271.00 | 349.00 | 458.00 | 731.00 |
| GG/RG/BG/BM/ZBM | 336.00 | 443.00 | 583.00 | 954.00 |



VICTORIAL

MATERIAL : ZINC

| Finish | 96MM | 160MM | 224MM | 288MM |
|--------------|--------|--------|--------|--------|
| CPSil./BROWN | 222.00 | 367.00 | 591.00 | 725.00 |

CABINET SERIES



YORK

MATERIAL : ZINC

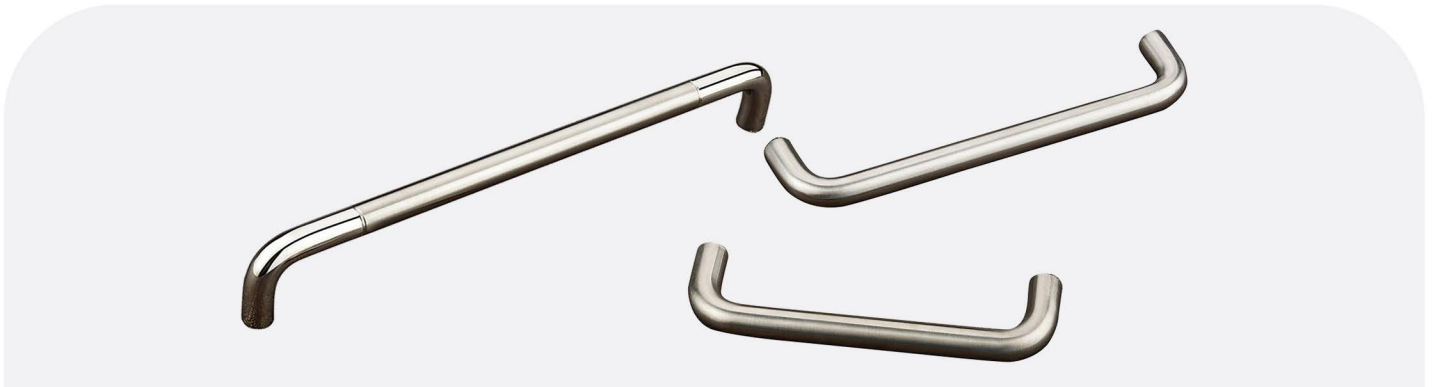
| Finish | 96MM | 160MM | 224MM | 288MM |
|------------------|--------|--------|--------|--------|
| CP/STT/BA/CA | 220.00 | 362.00 | 596.00 | 785.00 |
| GTT/RG/BG/BM/ZBM | 271.00 | 459.00 | 777.00 | 999.00 |



D-OVEL

MATERIAL : STAINLESS STEEL

| Finish | 96MM | 128MM | 160MM | 192MM | 224MM |
|--------|--------|--------|--------|--------|--------|
| SS | 130.00 | 184.00 | 247.00 | 304.00 | 339.00 |
| STT | 137.00 | 190.00 | 249.00 | 311.00 | 342.00 |



D-HANDLE

MATERIAL : STAINLESS STEEL

| Finish | OD MM | 96MM | 128MM | 160MM | 192MM | 224MM |
|--------|-------|--------|--------|--------|--------|--------|
| SS | 10MM | 72.00 | 92.00 | 122.00 | 137.00 | 147.00 |
| STT | 10MM | 78.00 | 97.00 | 127.00 | 139.00 | 152.00 |
| SS | 12MM | 110.00 | 137.00 | 164.00 | 184.00 | 209.00 |
| STT | 12MM | 117.00 | 139.00 | 169.00 | 190.00 | 212.00 |



C-HANDLE

MATERIAL : STAINLESS STEEL

| Finish | OD MM | 96MM | 128MM | 160MM | 192MM | 224MM |
|--------|-------|--------|--------|--------|--------|--------|
| SS | 10MM | 72.00 | 92.00 | 122.00 | 137.00 | 147.00 |
| STT | 10MM | 78.00 | 97.00 | 127.00 | 139.00 | 152.00 |
| SS | 12MM | 110.00 | 137.00 | 164.00 | 184.00 | 209.00 |
| STT | 12MM | 117.00 | 139.00 | 169.00 | 190.00 | 212.00 |



CHOCO
MATERIAL : AL.

| Finish | 96MM | 192MM | 256MM | 320MM | 450MM | 600MM | 900MM | 1200MM |
|-----------|--------|--------|--------|--------|--------|---------|---------|---------|
| SS/BA | 225.00 | 392.00 | 467.00 | 583.00 | 788.00 | 1029.00 | 1746.00 | 2279.00 |
| ZBM/GM/RG | 236.00 | 412.00 | 490.00 | 612.00 | 827.00 | 1080.00 | 1833.00 | 2393.00 |



CAMP
MATERIAL : AL.

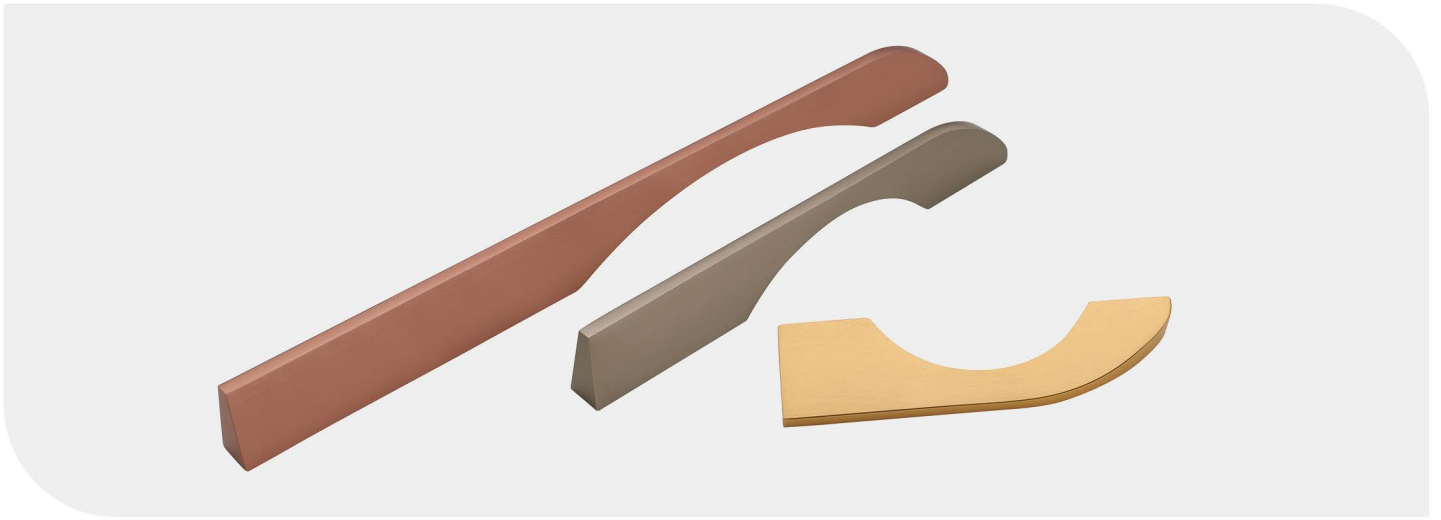
| Finish | 96MM | 192MM | 256MM | 320MM | 450MM | 600MM | 900MM | 1200MM |
|-----------|--------|--------|--------|--------|--------|---------|---------|---------|
| SS/BA | 238.00 | 413.00 | 492.00 | 617.00 | 833.00 | 1088.00 | 1833.00 | 2396.00 |
| ZBM/GM/RG | 250.00 | 434.00 | 517.00 | 648.00 | 875.00 | 1142.00 | 1925.00 | 2516.00 |



TWIST
MATERIAL : AL.

| Finish | 96MM | 192MM | 256MM | 320MM | 450MM | 600MM | 900MM | 1200MM |
|-----------|--------|--------|--------|--------|--------|---------|---------|---------|
| SS/BA | 221.00 | 388.00 | 463.00 | 579.00 | 779.00 | 1021.00 | 1729.00 | 2258.00 |
| ZBM/GM/RG | 232.00 | 407.00 | 486.00 | 608.00 | 818.00 | 1072.00 | 1815.00 | 2371.00 |

AL. WARDROBE HANDLE



PITCH

MATERIAL : AL.

| Finish | 96MM | 192MM | 256MM | 320MM | 450MM | 600MM | 900MM | 1200MM |
|-----------|--------|--------|--------|--------|---------|---------|---------|---------|
| SS/BA | 292.00 | 500.00 | 608.00 | 754.00 | 1017.00 | 1329.00 | 2188.00 | 2863.00 |
| ZBM/GM/RG | 307.00 | 525.00 | 638.00 | 792.00 | 1068.00 | 1395.00 | 2297.00 | 3006.00 |



CHAIR

MATERIAL : AL.

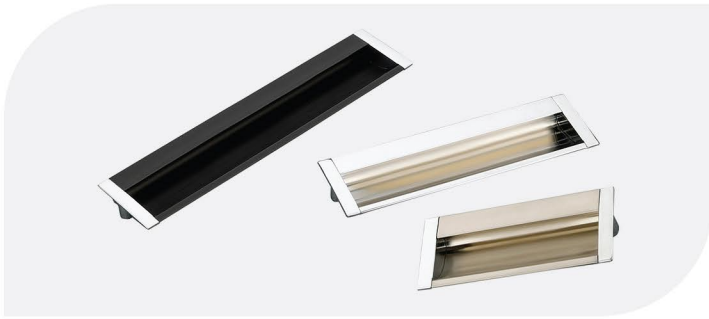
| Finish | 96MM | 192MM | 256MM | 320MM | 450MM | 600MM | 900MM | 1200MM |
|-----------|--------|--------|--------|--------|---------|---------|---------|---------|
| SS/BA | 283.00 | 479.00 | 575.00 | 713.00 | 958.00 | 1246.00 | 2063.00 | 2696.00 |
| ZBM/GM/RG | 297.00 | 503.00 | 604.00 | 749.00 | 1006.00 | 1308.00 | 2166.00 | 2831.00 |



HOCKEY

MATERIAL : AL.

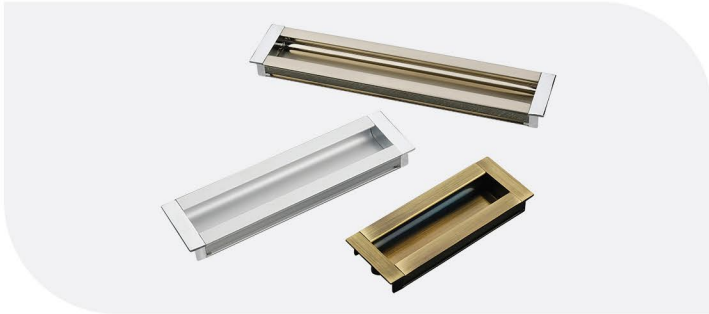
| Finish | 192MM | 256MM | 320MM | 450MM | 600MM | 900MM | 1200MM |
|-----------|--------|--------|--------|---------|---------|---------|---------|
| SS/BA | 579.00 | 738.00 | 913.00 | 1238.00 | 1608.00 | 2621.00 | 3438.00 |
| ZBM/GM/RG | 608.00 | 775.00 | 959.00 | 1300.00 | 1688.00 | 2752.00 | 3610.00 |



OPEL-1

MATERIAL : AL.+ZINC

| SIZE | SILVER/BROWN | CP/SS | BA/ZBM |
|------|--------------|--------|--------|
| 3" | 175.00 | 234.00 | 264.00 |
| 4" | 192.00 | 276.00 | 306.00 |
| 6" | 234.00 | 359.00 | 406.00 |
| 8" | 267.00 | 439.00 | 493.00 |
| 10" | 306.00 | 514.00 | 581.00 |
| 12" | 356.00 | 606.00 | 681.00 |



OPEL-2

MATERIAL : AL.+ZINC

| SIZE | SILVER/BROWN | CP/SS | BA/ZBM |
|------|--------------|--------|--------|
| 3" | 180.00 | 242.00 | 276.00 |
| 4" | 205.00 | 289.00 | 326.00 |
| 6" | 242.00 | 376.00 | 423.00 |
| 8" | 284.00 | 451.00 | 506.00 |
| 10" | 317.00 | 531.00 | 598.00 |
| 12" | 364.00 | 618.00 | 698.00 |



AP-7

MATERIAL : ALUMINIUM

| SIZE | CP/SS | BA/ZBM |
|-------|--------|--------|
| 32mm | 97.00 | 105.00 |
| 64mm | 159.00 | 175.00 |
| 96mm | 214.00 | 234.00 |
| 128mm | 256.00 | 281.00 |
| 160mm | 301.00 | 326.00 |
| 224mm | 418.00 | 459.00 |



AP-J

MATERIAL : ALUMINIUM

| SIZE | CP/SS | BA/ZBM |
|-------|--------|--------|
| 32mm | 100.00 | 114.00 |
| 64mm | 159.00 | 175.00 |
| 96mm | 205.00 | 230.00 |
| 128mm | 251.00 | 276.00 |
| 160mm | 289.00 | 317.00 |
| 224mm | 426.00 | 476.00 |



AP-V

MATERIAL : ALUMINIUM

| SIZE | CP/SS | BA/ZBM |
|-------|--------|--------|
| 32mm | 92.00 | 100.00 |
| 64mm | 150.00 | 164.00 |
| 96mm | 205.00 | 230.00 |
| 128mm | 225.00 | 267.00 |
| 160mm | 289.00 | 317.00 |
| 224mm | 418.00 | 459.00 |



AP-Y

MATERIAL : ALUMINIUM

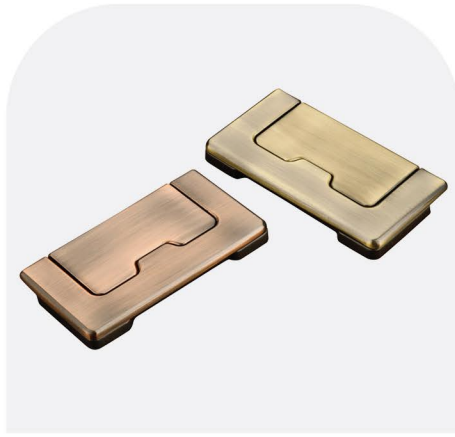
| SIZE | CP/SS | BA/ZBM |
|-------|--------|--------|
| 32mm | 105.00 | 117.00 |
| 64mm | 167.00 | 189.00 |
| 96mm | 225.00 | 251.00 |
| 128mm | 276.00 | 301.00 |
| 160mm | 326.00 | 359.00 |
| 224mm | 459.00 | 509.00 |

DRAWER KADI



DR. No-2 MATERIAL : ZINC

| Finish | SMALL | BIG |
|----------------|--------|--------|
| Sil./BA/CA | 97.00 | 160.00 |
| GM/SG/BMTT/ZBM | 137.00 | 192.00 |



DR. No-3 MATERIAL : ZINC

| Finish | BIG |
|-----------------|--------|
| STT/BA/CA | 190.00 |
| GTT/SG/BMTT/ZBM | 229.00 |



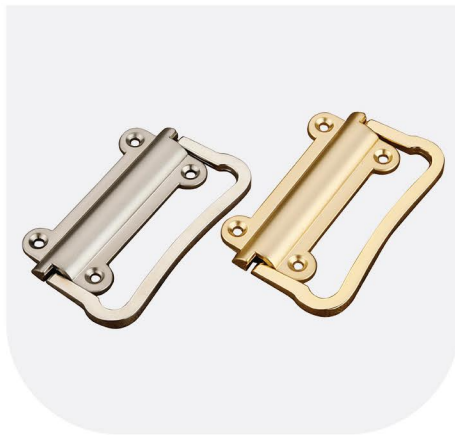
DR. No-4 MATERIAL : ZINC

| Finish | SMALL | BIG |
|-----------|--------|--------|
| SS/BA/CA | 112.00 | 137.00 |
| GG/BG/ZBM | 157.00 | 165.00 |



DR. No-5 MATERIAL : ZINC

| Finish | BIG |
|-----------------|--------|
| STT/BA/CA | 179.00 |
| GTT/SG/BMTT/ZBM | 215.00 |



DR. No-11 MATERIAL : ZINC

| Finish | BIG |
|-----------------|--------|
| STT/BA/CA | 142.00 |
| GTT/SG/BMTT/ZBM | 170.00 |



DR. No-18 MATERIAL : ZINC

| Finish | SMALL | BIG |
|-----------------|--------|--------|
| STT/BA/CA | 107.00 | 170.00 |
| GTT/SG/BMTT/ZBM | 150.00 | 204.00 |



DR. No-28 MATERIAL : ZINC

| Finish | SMALL | BIG |
|-----------------|--------|--------|
| STT/BA/CA | 90.00 | 149.00 |
| GTT/SG/BMTT/ZBM | 125.00 | 179.00 |



DR. No-31 MATERIAL : ZINC

| Finish | BIG |
|-----------------|--------|
| STT/BA/CA | 140.00 |
| GTT/SG/BMTT/ZBM | 169.00 |



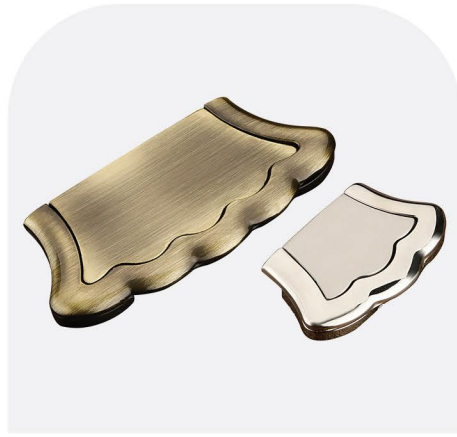
DR. No-32 MATERIAL : ZINC

| Finish | SMALL | BIG |
|-----------------|--------|--------|
| STT/BA/CA | 117.00 | 152.00 |
| GTT/SG/BMTT/ZBM | 164.00 | 182.00 |



DR. No-34 MATERIAL : ZINC

| Finish | BIG |
|-----------------|--------|
| STT/BA/CA | 164.00 |
| GTT/SG/BMTT/ZBM | 197.00 |



DR. No-35 MATERIAL : ZINC

| Finish | SMALL | BIG |
|-----------------|--------|--------|
| STT/BA/CA | 102.00 | 147.00 |
| GTT/SG/BMTT/ZBM | 142.00 | 177.00 |



DR. No-47 MATERIAL : ZINC

| Finish | BIG |
|-----------------|--------|
| SSCP/BA/CA | 165.00 |
| GTT/SG/BMTT/ZBM | 199.00 |



DR. No-58 MATERIAL : ZINC

| Finish | 32MM | 64MM | 96MM |
|--------------|--------|--------|--------|
| SSCP/BA/CA | 127.00 | 234.00 | 339.00 |
| GTT/BMTT/ZBM | 177.00 | 281.00 | 406.00 |



DR. No-63 MATERIAL : ZINC

| Finish | SMALL | BIG |
|-----------------|--------|--------|
| SSCP/BA/CA | 140.00 | 219.00 |
| GTT/SG/BMTT/ZBM | 195.00 | 262.00 |



DR. No-64 MATERIAL : ZINC

| Finish | SMALL | BIG |
|-----------------|--------|--------|
| SSCP/BA/CA | 129.00 | 179.00 |
| GTT/SG/BMTT/ZBM | 179.00 | 214.00 |



DR. No-65 MATERIAL : ZINC

| Finish | BIG |
|-----------------|--------|
| SSCP/BA/CA | 150.00 |
| GTT/SG/BMTT/ZBM | 180.00 |



DR. No-76 MATERIAL : ZINC

| Finish | BIG |
|-----------------|--------|
| SSCP/BA/CA | 247.00 |
| GTT/SG/BMTT/ZBM | 297.00 |



DR. No-77 MATERIAL : ZINC

| Finish | BIG |
|-----------------|--------|
| SSCP/BA/CA | 257.00 |
| GTT/SG/BMTT/ZBM | 309.00 |

DRAWER KADI



DR. No - 78

MATERIAL : ZINC

| Finish | BIG |
|--------------------|--------|
| SSCP/BA/CA | 235.00 |
| GTT/SG/RG/BMTT/ZBM | 282.00 |



DR. No - 79

MATERIAL : ZINC

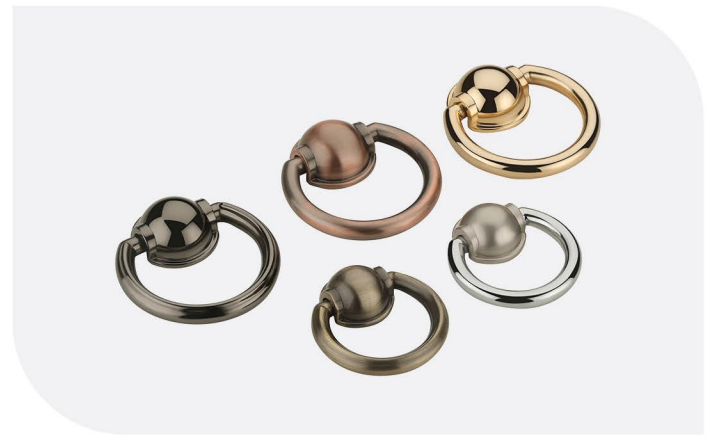
| Finish | BIG |
|-----------------|--------|
| SSCP/BA/CA | 160.00 |
| GTT/SG/BMTT/ZBM | 192.00 |



DR. No-80

MATERIAL : ZINC

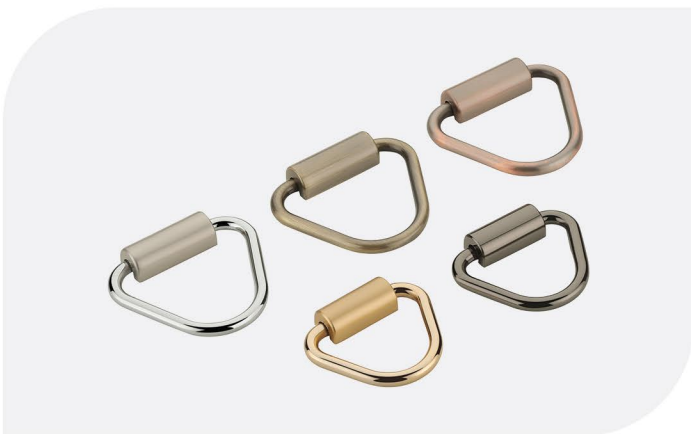
| Finish | BIG |
|-----------------|--------|
| SSCP/BA/CA | 120.00 |
| GTT/SG/BMTT/ZBM | 169.00 |



DR. No-81

MATERIAL : ZINC

| Finish | SMALL | BIG |
|-----------------|--------|--------|
| SSCP/BA/CA | 124.00 | 177.00 |
| GTT/SG/BMTT/ZBM | 172.00 | 212.00 |



DR. No-82

MATERIAL : ZINC

| Finish | SMALL | BIG |
|-----------------|--------|--------|
| SSCP/BA/CA | 130.00 | 162.00 |
| GTT/SG/BMTT/ZBM | 182.00 | 194.00 |





DR. No - 6

MATERIAL : ZINC

| Finish | 128MM |
|---------------|--------|
| Sil./CP/BA/CA | 296.00 |
| GG/RG/BG/ZBM | 356.00 |



DR. No - 7

MATERIAL : ZINC

| Finish | 96MM | 128MM |
|--------------|--------|--------|
| CP/SS/BA/CA | 144.00 | 247.00 |
| GG/RG/BM/ZBM | 174.00 | 297.00 |



DR. No - 8

MATERIAL : ZINC

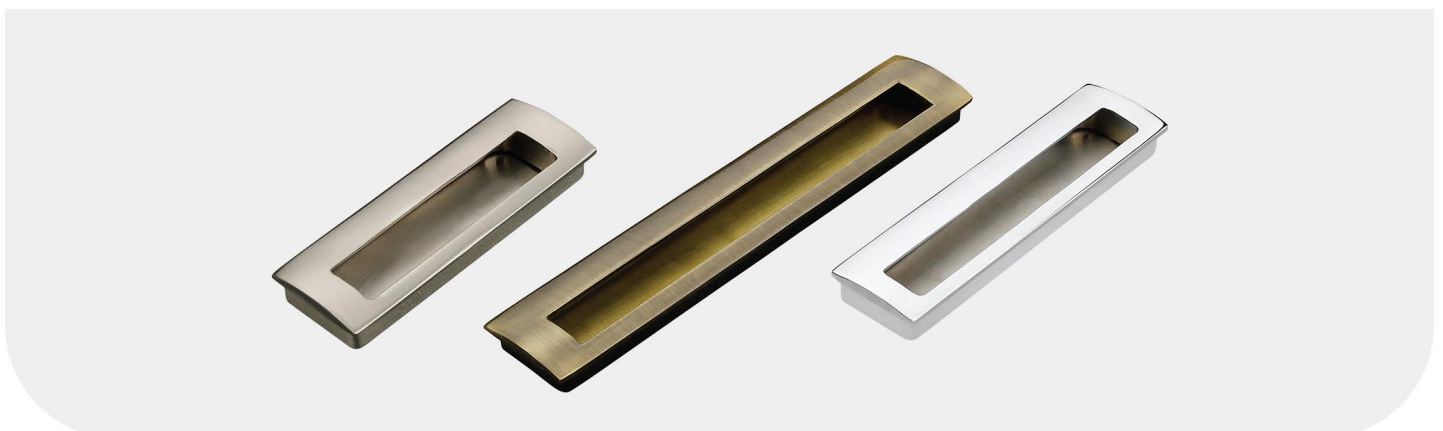
| Finish | 96MM | 160MM |
|--------------|--------|--------|
| CP/SS/BA/CA | 187.00 | 251.00 |
| GG/RG/BM/ZBM | 264.00 | 301.00 |



DR. No - 9

MATERIAL : ZINC

| Finish | 85MM | 185MM | 285MM | 385MM | 585MM |
|-----------------|--------|--------|--------|--------|---------|
| CP/S.S/BA/CA | 224.00 | 402.00 | 631.00 | 828.00 | 1197.00 |
| G.G/R.G/B.M/ZBM | 271.00 | 481.00 | 757.00 | 992.00 | 1438.00 |



DR. No - 17

MATERIAL : ZINC

| Finish | 64MM | 96MM | 128MM | 160MM | 192MM | 224MM |
|--------------|--------|--------|--------|--------|--------|--------|
| CP/SS/BA/CA | 219.00 | 271.00 | 359.00 | 454.00 | 616.00 | 721.00 |
| GG/RG/BM/ZBM | 261.00 | 326.00 | 431.00 | 546.00 | 741.00 | 867.00 |

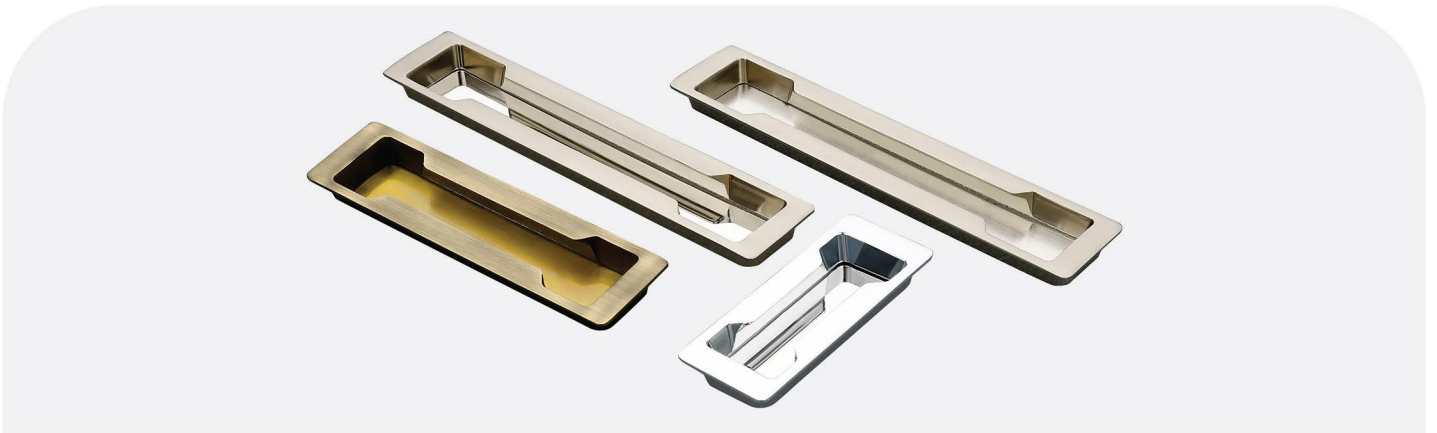
SLIDING DOOR HANDLE



DR. No-51

MATERIAL : ZINC

| Finish | 96MM | 160MM | 224MM |
|--------------|--------|--------|--------|
| SSCP/BA/CA | 346.00 | 548.00 | 788.00 |
| GTT/BMTT/ZBM | 416.00 | 656.00 | 945.00 |



DR. No-52

MATERIAL : ZINC

| Finish | 96MM | 160MM | 224MM |
|--------------|--------|--------|--------|
| CP/SS/BA/CA | 332.00 | 456.00 | 645.00 |
| GG/RG/BM/ZBM | 401.00 | 546.00 | 772.00 |



DR. No-53

MATERIAL : ZINC

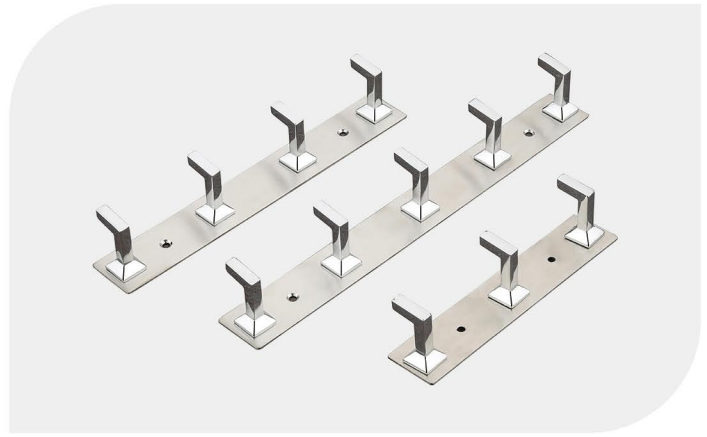
| Finish | 96MM | 160MM |
|--------------|--------|--------|
| CP/SS/BA/CA | 287.00 | 466.00 |
| GG/RG/BM/ZBM | 401.00 | 559.00 |



RIDER-221

MATERIAL : ZINC+SS

| | | | | | | | |
|--------|--------|--------|--------|--------|--------|--------|--------|
| Finish | 2 HK | 3 HK | 4 HK | 5 HK | 6 HK | 7 HK | 8 HK |
| SSCP | 167.00 | 251.00 | 334.00 | 418.00 | 501.00 | 585.00 | 668.00 |



L-222

MATERIAL : ZINC+SS

| | | | | | | | |
|--------|--------|--------|--------|--------|--------|--------|--------|
| Finish | 2 HK | 3 HK | 4 HK | 5 HK | 6 HK | 7 HK | 8 HK |
| SSCP | 167.00 | 251.00 | 334.00 | 418.00 | 501.00 | 585.00 | 668.00 |



BULLET-223

MATERIAL : ZINC+SS

| | | | | | | | |
|--------|--------|--------|--------|--------|--------|--------|--------|
| Finish | 2 HK | 3 HK | 4 HK | 5 HK | 6 HK | 7 HK | 8 HK |
| SSCP | 167.00 | 251.00 | 334.00 | 418.00 | 501.00 | 585.00 | 668.00 |



TITAN-224

MATERIAL : ZINC+SS

| | | | | | | | |
|--------|--------|--------|--------|--------|--------|--------|--------|
| Finish | 2 HK | 3 HK | 4 HK | 5 HK | 6 HK | 7 HK | 8 HK |
| SSCP | 167.00 | 251.00 | 334.00 | 418.00 | 501.00 | 585.00 | 668.00 |



MIRINDA-225

MATERIAL : ZINC+SS

| | | | | | | | |
|--------|--------|--------|--------|--------|--------|--------|--------|
| Finish | 2 HK | 3 HK | 4 HK | 5 HK | 6 HK | 7 HK | 8 HK |
| SSCP | 167.00 | 251.00 | 334.00 | 418.00 | 501.00 | 585.00 | 668.00 |



VH-226

MATERIAL : ZINC+SS

| | | | | | | | |
|--------|--------|--------|--------|--------|--------|--------|--------|
| Finish | 2 HK | 3 HK | 4 HK | 5 HK | 6 HK | 7 HK | 8 HK |
| SSCP | 167.00 | 251.00 | 334.00 | 418.00 | 501.00 | 585.00 | 668.00 |

COAT HOOK



DUCK-227

MATERIAL : ZINC+SS

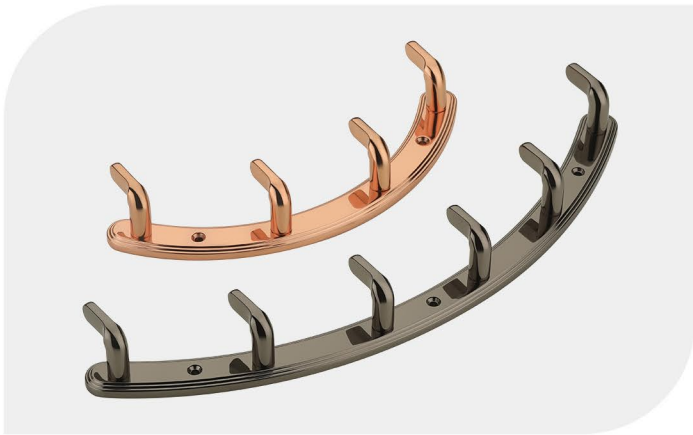
| Finish | 2 HK | 3 HK | 4 HK | 5 HK | 6 HK | 7 HK | 8 HK |
|--------|--------|--------|--------|--------|--------|--------|--------|
| SSCP | 167.00 | 251.00 | 334.00 | 418.00 | 501.00 | 585.00 | 668.00 |



KHUTI -228

MATERIAL : ZINC

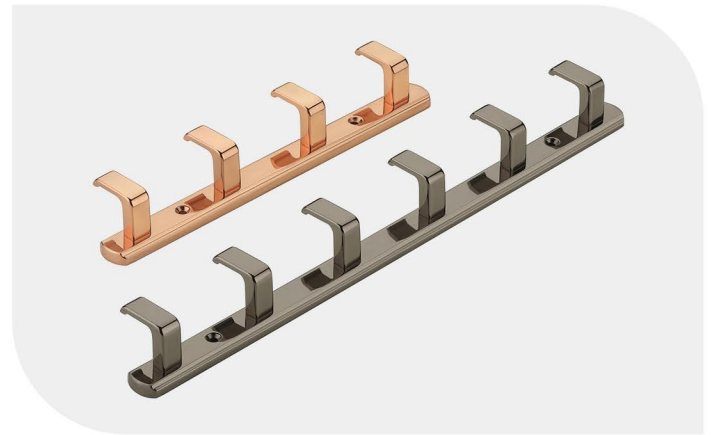
| Finish | 4 HK | 6 HK |
|---------------|--------|---------|
| CP/Sil./BA/CA | 599.00 | 993.00 |
| GM/RG/BG/ZBM | 690.00 | 1142.00 |



KHUTI -229

MATERIAL : ZINC

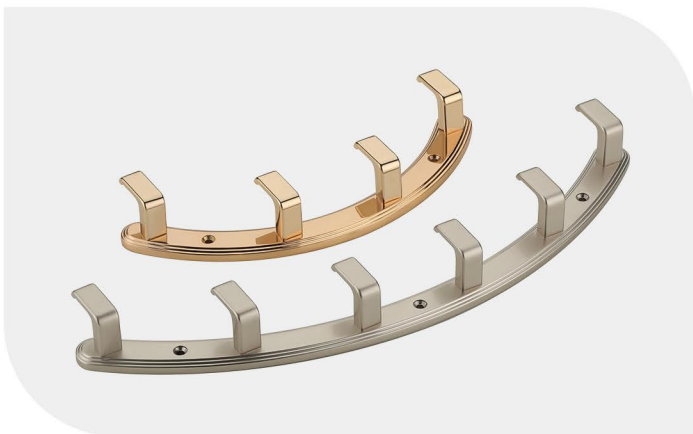
| Finish | 4 HK | 6 HK |
|---------------|--------|---------|
| CP/Sil./BA/CA | 599.00 | 993.00 |
| GM/RG/BG/ZBM | 690.00 | 1142.00 |



KHUTI -230

MATERIAL : ZINC

| Finish | 4 HK | 6 HK |
|---------------|--------|---------|
| CP/Sil./BA/CA | 599.00 | 993.00 |
| GM/RG/BG/ZBM | 690.00 | 1142.00 |



KHUTI -231

MATERIAL : ZINC

| Finish | 4 HK | 6 HK |
|---------------|--------|---------|
| CP/Sil./BA/CA | 599.00 | 993.00 |
| GM/RG/BG/ZBM | 690.00 | 1142.00 |





APPLE

MATERIAL : ZINC

| Finish | BIG |
|-----------------|--------|
| CP/Sil./BA/CA | 409.00 |
| GG/GM/RG/BG/ZBM | 533.00 |



ARROW

MATERIAL : ZINC

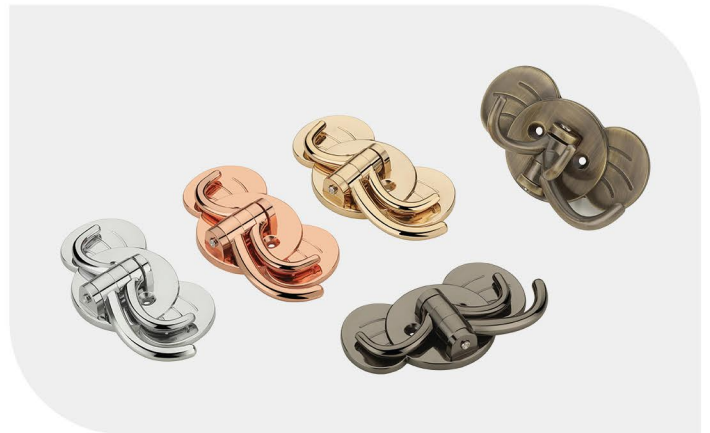
| Finish | BIG |
|-----------------|--------|
| CP/Sil./BA/CA | 217.00 |
| GG/GM/RG/BG/ZBM | 272.00 |



BARB

MATERIAL : ZINC

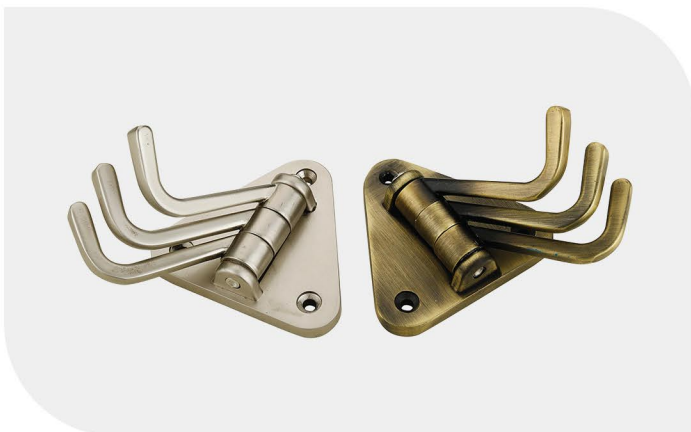
| Finish | BIG |
|-----------------|--------|
| CP/Sil./BA/CA | 404.00 |
| GG/GM/RG/BG/ZBM | 506.00 |



CALF

MATERIAL : ZINC

| Finish | BIG |
|-----------------|--------|
| CP/Sil./BA/CA | 412.00 |
| GG/GM/RG/BG/ZBM | 516.00 |



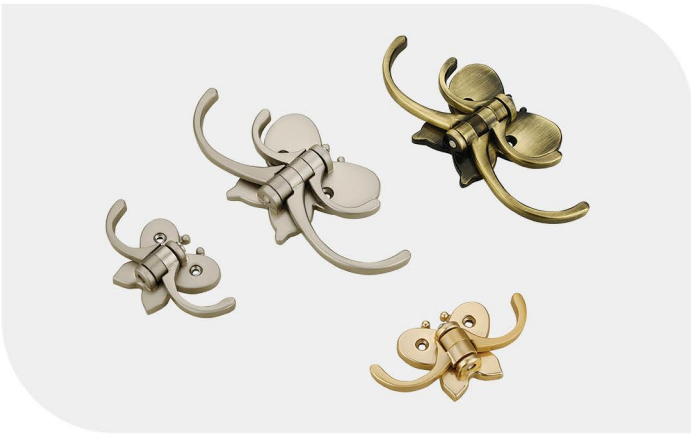
DELTA

MATERIAL : ZINC

| Finish | BIG |
|-----------------|--------|
| CP/Sil./BA/CA | 376.00 |
| GG/GM/RG/BG/ZBM | 469.00 |



ZINC KHUTI



FLY KING

MATERIAL : ZINC

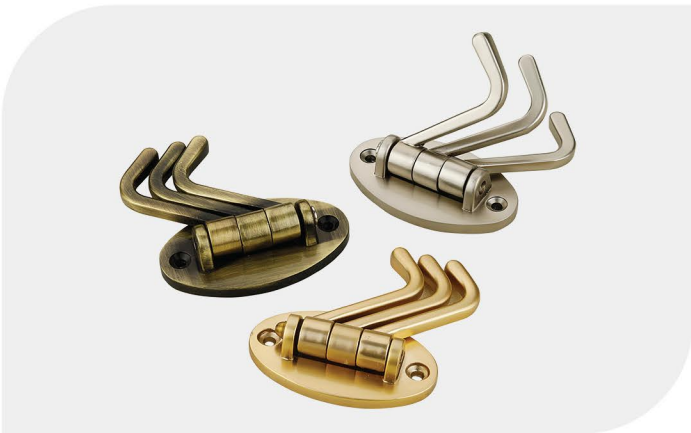
| Finish | SMALL | BIG |
|-----------------|--------|--------|
| CP/Sil./BA/CA | 209.00 | 438.00 |
| GG/GM/RG/BG/ZBM | 271.00 | 568.00 |



HORN

MATERIAL : ZINC

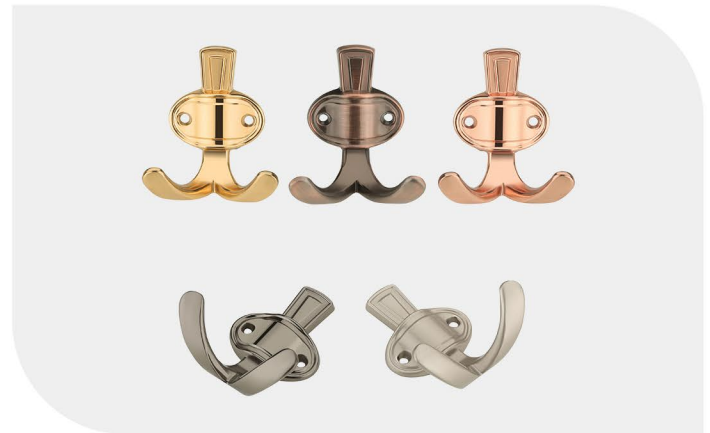
| Finish | BIG |
|-----------------|--------|
| CP/Sil./BA/CA | 334.00 |
| GG/GM/RG/BG/ZBM | 418.00 |



OVEL

MATERIAL : ZINC

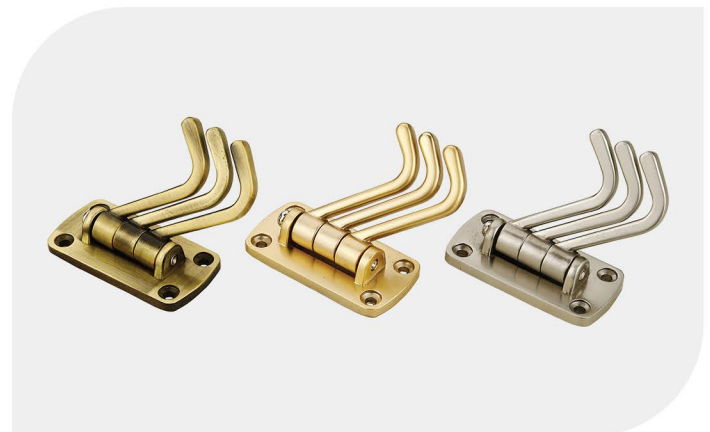
| Finish | BIG |
|-----------------|--------|
| CP/Sil./BA/CA | 362.00 |
| GG/GM/RG/BG/ZBM | 453.00 |



PRONG

MATERIAL : ZINC

| Finish | BIG |
|-----------------|--------|
| CP/Sil./BA/CA | 269.00 |
| GG/GM/RG/BG/ZBM | 334.00 |



SQUARE

MATERIAL : ZINC

| Finish | BIG |
|---------------------|--------|
| C.P/Sil./B.A/C.A | 356.00 |
| G.G/G.M/R.G/B.G/ZBM | 446.00 |



MATERIAL : ZINC

BUTTON KNOB

| Finish | SMALL |
|--------------|--------|
| CP/SS/BA/CA | 104.00 |
| GG/RG/BG/ZBM | 115.00 |



MATERIAL : ZINC

BAT KNOB

| Finish | 40MM | 70MM |
|-----------------|--------|--------|
| CP/SS/BA/CA | 150.00 | 225.00 |
| GG/GM/RG/BG/ZBM | 165.00 | 249.00 |



MATERIAL : ZINC

DOT KNOB

| Finish | BIG |
|-------------------|--------|
| SSCP/BA/CA/CPCoI. | 165.00 |
| GM/SG/RG/BMTT/ZBM | 184.00 |



MATERIAL : ZINC

DAISY KNOB

| Finish | BIG |
|--------------|--------|
| CP/SS/BA/CA | 182.00 |
| GG/RG/BG/ZBM | 202.00 |



MATERIAL : ZINC

FRET KNOB

| Finish | SMALL | BIG |
|--------------|--------|--------|
| CP/SS/BA/CA | 97.00 | 149.00 |
| GG/RG/BG/ZBM | 105.00 | 160.00 |



MATERIAL : ZINC

JADE KNOB

| Finish | BIG |
|--------------|--------|
| CP/SS/BA/CA | 187.00 |
| GG/RG/BG/ZBM | 207.00 |



MATERIAL : ZINC

LIGHT KNOB

| Finish | BIG |
|--------------|--------|
| CP/SS/BA/CA | 97.00 |
| GG/RG/BG/ZBM | 105.00 |



MATERIAL : ZINC

ROSA KNOB

| Finish | BIG |
|--------------|--------|
| CP/SS/BA/CA | 152.00 |
| GG/RG/BG/ZBM | 165.00 |



MATERIAL : ZINC

SIREN KNOB

| Finish | BIG |
|--------------|--------|
| CP/SS/BA/CA | 245.00 |
| GG/RG/BG/ZBM | 271.00 |

KNOB



MATERIAL : ZINC

COIN KNOB

| Finish | BIG |
|--------------|--------|
| CP/SS/BA/CA | 152.00 |
| GG/RG/BG/ZBM | 167.00 |



MATERIAL : ZINC

KS-KNOB

| Finish | BIG |
|--------------|--------|
| CP/SS/BA/CA | 149.00 |
| GG/RG/BG/ZBM | 164.00 |



MATERIAL : ZINC

L-KNOB

| Finish | BIG |
|--------------|--------|
| CP/SS/BA/CA | 319.00 |
| GG/RG/BG/ZBM | 351.00 |



MATERIAL : ZINC

PF-KNOB

| Finish | BIG |
|--------------|--------|
| CP/SS/BA/CA | 140.00 |
| GG/RG/BG/ZBM | 155.00 |



MATERIAL : ZINC

SAURABH KNOB

| Finish | SMALL | BIG |
|-------------------|--------|--------|
| SSCP/BA/CA/CPCol. | 100.00 | 197.00 |
| GM/SG/RG/BMTT/ZBM | 110.00 | 215.00 |



MATERIAL : ZINC

SUN KNOB

| Finish | BIG |
|--------------|--------|
| CP/SS/BA/CA | 165.00 |
| GG/RG/BG/ZBM | 180.00 |



MATERIAL : ZINC

STAR KNOB

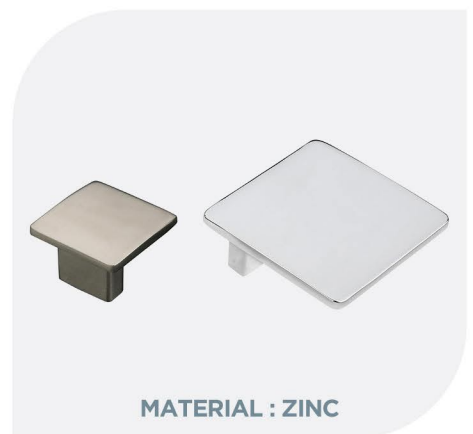
| Finish | BIG |
|--------------|--------|
| CP/SS/BA/CA | 159.00 |
| GG/RG/BG/ZBM | 174.00 |



MATERIAL : ZINC

U-KNOB

| Finish | BIG |
|--------------|--------|
| CP/SS/BA/CA | 240.00 |
| GG/RG/BG/ZBM | 266.00 |



MATERIAL : ZINC

VKB-KNOB

| Finish | SMALL | BIG |
|--------------|--------|--------|
| CP/SS/BA/CA | 115.00 | 225.00 |
| GG/RG/BG/ZBM | 127.00 | 247.00 |



NO.1 OVEL MATERIAL : ZINC

| Finish | M.R.P |
|---------------|-------|
| CP/Sil./BA/CA | 43.00 |
| GG/RG/BG/ZBM | 52.00 |



NO.2 COOK MATERIAL : ZINC

| Finish | M.R.P |
|---------------|-------|
| CP/Sil./BA/CA | 40.00 |
| GG/RG/BG/ZBM | 47.00 |



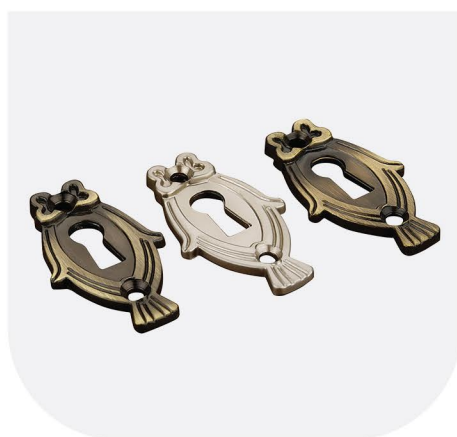
NO.3 RAJWADI MATERIAL : ZINC

| Finish | M.R.P |
|---------------|-------|
| CP/Sil./BA/CA | 37.00 |
| GG/RG/BG/ZBM | 45.00 |



NO.4 FLOWER MATERIAL : ZINC

| Finish | M.R.P |
|---------------|-------|
| CP/Sil./BA/CA | 38.00 |
| GG/RG/BG/ZBM | 45.00 |



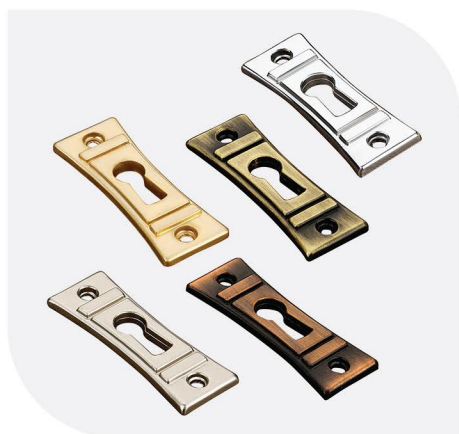
NO.5 FISH MATERIAL : ZINC

| Finish | M.R.P |
|---------------|-------|
| CP/Sil./BA/CA | 37.00 |
| GG/RG/BG/ZBM | 45.00 |



NO.6 SQUARE MATERIAL : ZINC

| Finish | M.R.P |
|---------------|-------|
| CP/Sil./BA/CA | 38.00 |
| GG/RG/BG/ZBM | 45.00 |



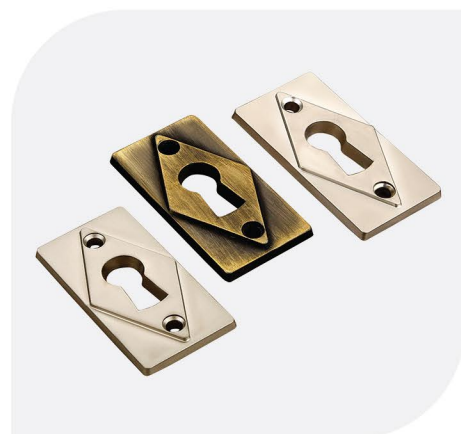
NO.7 GILLET MATERIAL : ZINC

| Finish | M.R.P |
|---------------|-------|
| CP/Sil./BA/CA | 38.00 |
| GG/RG/BG/ZBM | 45.00 |



NO.8 SIKKO MATERIAL : ZINC

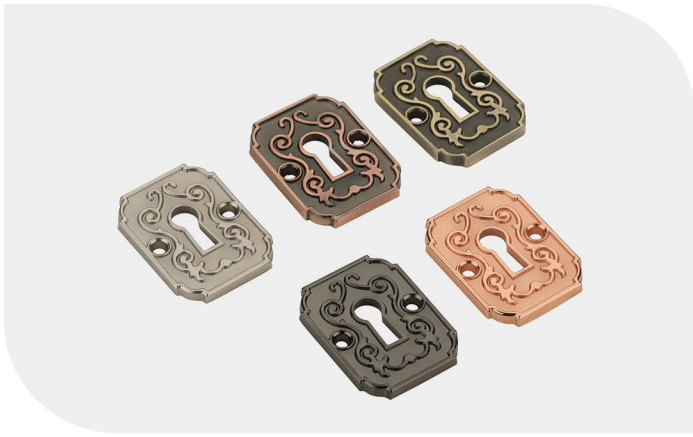
| Finish | M.R.P |
|---------------|-------|
| CP/Sil./BA/CA | 32.00 |
| GG/RG/BG/ZBM | 45.00 |



NO.10 DIAMOND MATERIAL : ZINC

| Finish | M.R.P |
|---------------|-------|
| CP/Sil./BA/CA | 42.00 |
| GG/RG/BG/ZBM | 50.00 |

KEY HOLE



NO.11 WELL

MATERIAL : ZINC

| Finish | M.R.P |
|---------------|-------|
| CP/Sil./BA/CA | 50.00 |
| GG/RG/BG/ZBM | 60.00 |



NO.12 TREE

MATERIAL : ZINC

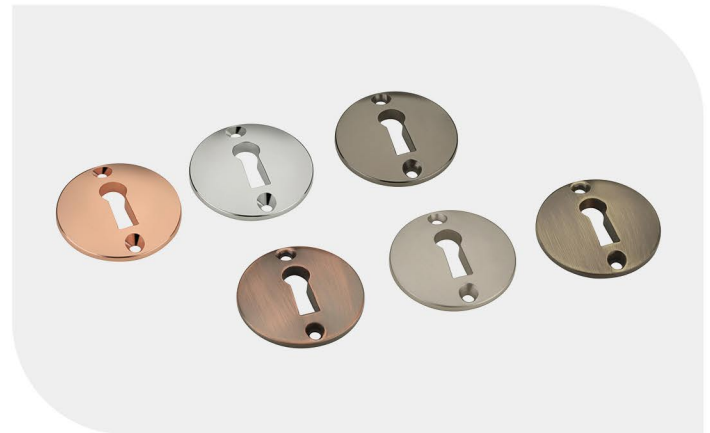
| Finish | M.R.P |
|---------------|-------|
| CP/Sil./BA/CA | 57.00 |
| GG/RG/BG/ZBM | 68.00 |



NO.13 SHIELD

MATERIAL : ZINC

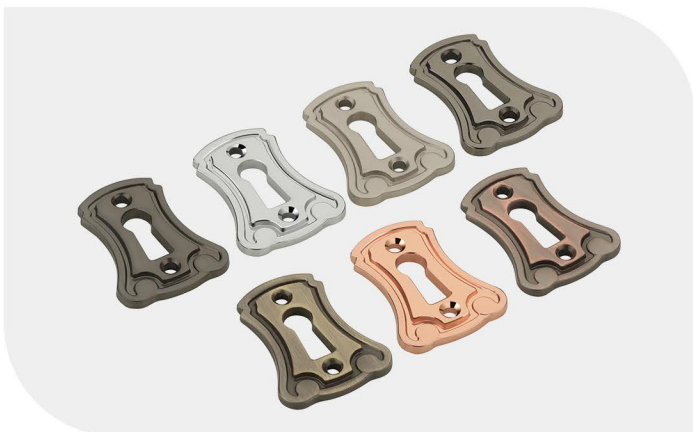
| Finish | M.R.P |
|---------------|-------|
| CP/Sil./BA/CA | 42.00 |
| GG/RG/BG/ZBM | 53.00 |



NO.14 COIN

MATERIAL : ZINC

| Finish | M.R.P |
|---------------|-------|
| CP/Sil./BA/CA | 40.00 |
| GG/RG/BG/ZBM | 50.00 |



NO.15 FROK

MATERIAL : ZINC

| Finish | M.R.P |
|---------------|-------|
| CP/Sil./BA/CA | 42.00 |
| GG/RG/BG/ZBM | 53.00 |



NO.16 KEY

MATERIAL : ZINC

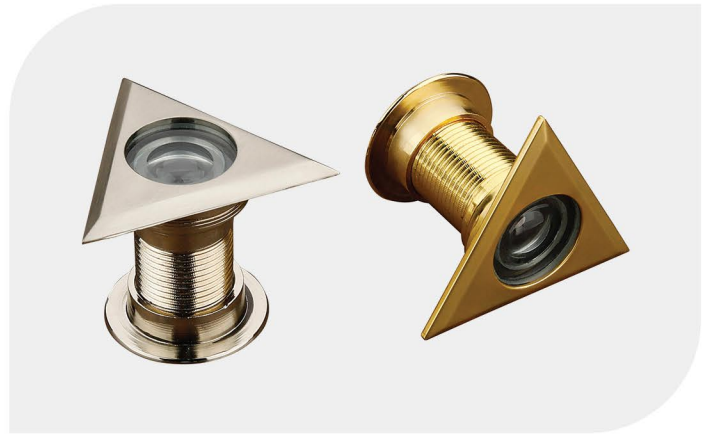
| Finish | M.R.P |
|---------------|-------|
| CP/Sil./BA/CA | 40.00 |
| GG/RG/BG/ZBM | 50.00 |



No. 1 ROUND

MATERIAL : ZINC

| Finish | M.R.P |
|--------------|--------|
| CP/SS/BA/CA | 302.00 |
| GG/RG/BG/ZBM | 349.00 |



No. 3 DELTA

MATERIAL : ZINC

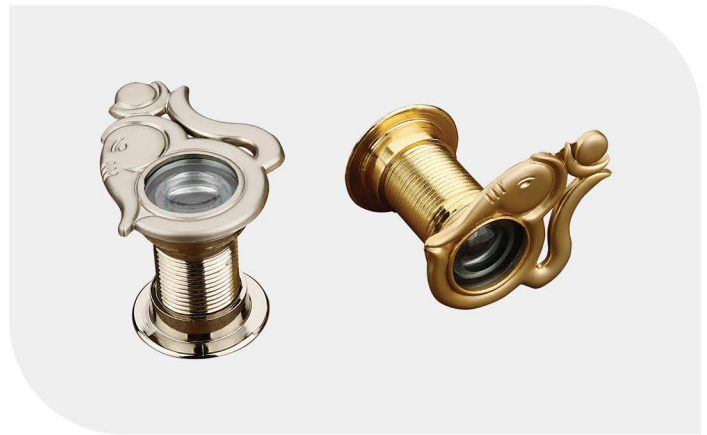
| Finish | M.R.P |
|--------------|--------|
| CP/SS/BA/CA | 317.00 |
| GG/RG/BG/ZBM | 364.00 |



No. 4 SQUARE

MATERIAL : ZINC

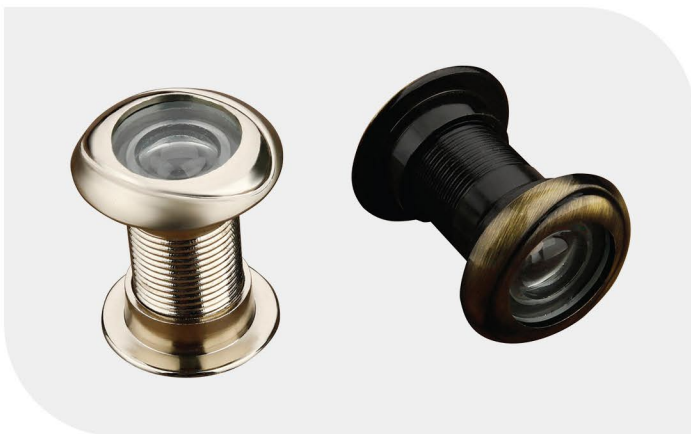
| Finish | M.R.P |
|--------------|--------|
| CP/SS/BA/CA | 321.00 |
| GG/RG/BG/ZBM | 367.00 |



No. 5 GANESH

MATERIAL : ZINC

| Finish | M.R.P |
|--------------|--------|
| CP/Sil/BA/CA | 339.00 |
| GG/RG/BG/ZBM | 389.00 |



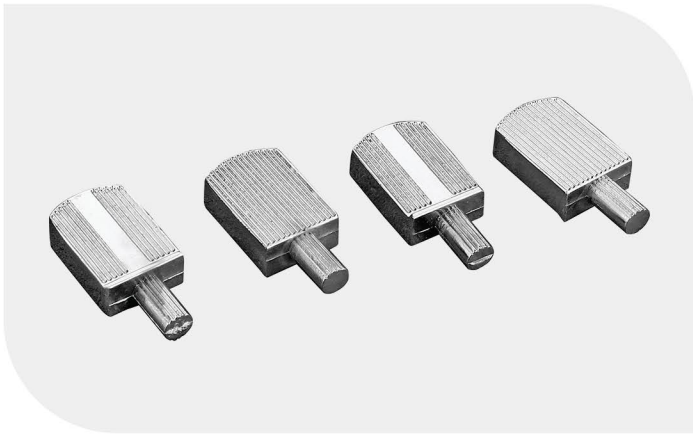
No. 7 EYE

MATERIAL : ZINC

| Finish | M.R.P |
|--------------|--------|
| CP/SS/BA/CA | 292.00 |
| GG/RG/BG/ZBM | 336.00 |



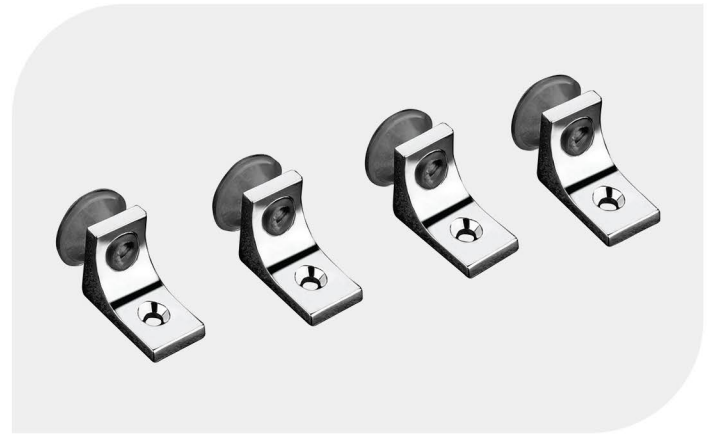
VACUUM SELF BUTTON



SQ-A1

MATERIAL : ZINC

| Finish | M.R.P |
|--------------|-------|
| CP/Sil. | 43.00 |
| GG/RG/BG/ZBM | 53.00 |



L-A2

MATERIAL : ZINC

| Finish | M.R.P |
|--------------|-------|
| CP/Sil. | 35.00 |
| GG/RG/BG/ZBM | 42.00 |



B-4

MATERIAL : ZINC

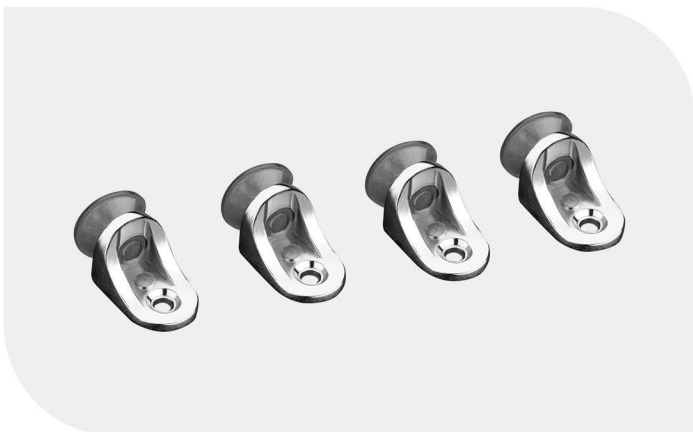
| Finish | M.R.P |
|--------------|-------|
| CP/Sil. | 32.00 |
| GG/RG/BG/ZBM | 38.00 |



B-5

MATERIAL : ZINC

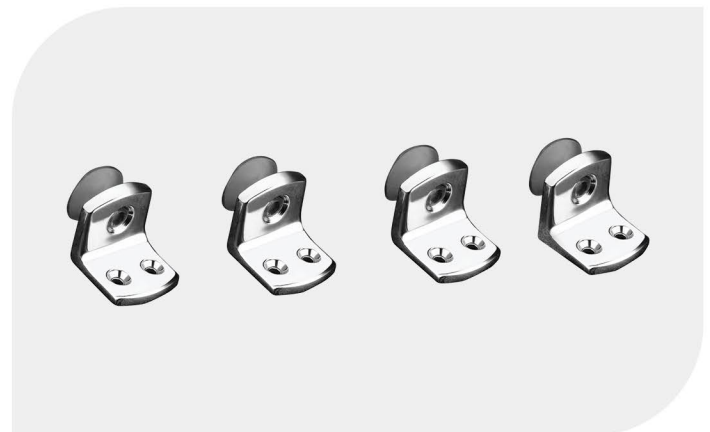
| Finish | M.R.P |
|--------------|-------|
| CP/Sil. | 35.00 |
| GG/RG/BG/ZBM | 42.00 |



B-6

MATERIAL : ZINC

| Finish | M.R.P |
|--------------|-------|
| CP/Sil. | 32.00 |
| GG/RG/BG/ZBM | 38.00 |



L-BRACKET

MATERIAL : ZINC

| Finish | M.R.P |
|--------------|-------|
| CP/Sil. | 73.00 |
| GG/RG/BG/ZBM | 89.00 |



R - HINGES

MATERIAL : ZINC

| Finish | SIZE | MRP |
|--------|------|--------|
| SS | 6MM | 361.00 |
| SS | 8MM | 371.00 |

Paire
Rate



SQ - HINGES

MATERIAL : ZINC

| Finish | SIZE | MRP |
|--------|------|--------|
| SS | 6MM | 372.00 |
| SS | 8MM | 386.00 |

Paire
Rate



BIG - HINGES

MATERIAL : ZINC

| Finish | SIZE | MRP |
|--------|------|--------|
| SS | 6MM | 414.00 |
| SS | 8MM | 421.00 |

Paire
Rate



M - HINGES

MATERIAL : ZINC

| Finish | SIZE | MRP |
|--------|------|--------|
| SS | 6MM | 683.00 |
| SS | 8MM | 683.00 |

Paire
Rate



GLASS KB

MATERIAL : ZINC

| Finish | SIZE | MRP |
|--------|------|--------|
| SS | 6MM | 135.00 |
| SS | 8MM | 135.00 |



PREMIUM | PVC MAGNET CATCHER



2022

MATERIAL : ZINC+SS

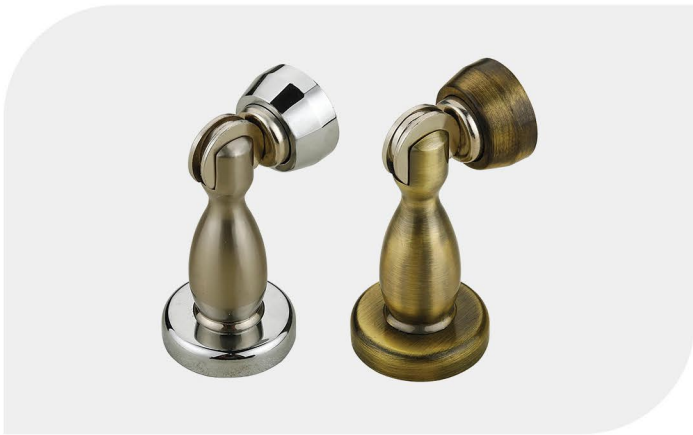
| Finish | M.R.P |
|--------|--------|
| SSCP | 576.00 |
| BA | 606.00 |



2023 ADJUSTABLE

MATERIAL : ZINC

| Finish | M.R.P |
|--------|--------|
| SSCP | 483.00 |
| BA | 576.00 |



2024

MATERIAL : ZINC

| Finish | M.R.P |
|--------|--------|
| SSCP | 553.00 |
| BA | 593.00 |



SQUARE

MATERIAL : PP VERGIN

| Finish | No. 01 MRP | No. 02 MRP | No. 03 MRP |
|--------|------------|------------|------------|
| IVORY | 30.00 | 37.00 | 43.00 |
| WHITE | 30.00 | 37.00 | 43.00 |
| BROWN | 30.00 | 37.00 | 43.00 |



NO-05

MATERIAL : PP VERGIN

| Finish | No. 05 MRP |
|--------|------------|
| IVORY | 144.00 |
| WHITE | 144.00 |
| BROWN | 144.00 |



TB-A



TB-B



TB-C



TB-D



TB-E

TB-A,B,C,D,E

MATERIAL : ALUMINIUM+SS

| FINISH | 3" | 4" | 6" | 8" | 10" | 12" | 16" | 20" | 24" |
|--------|--------|--------|--------|--------|--------|--------|--------|---------|---------|
| CP | 189.00 | 230.00 | 309.00 | 406.00 | 493.00 | 585.00 | 773.00 | 960.00 | 1166.00 |
| SS | 200.00 | 242.00 | 326.00 | 431.00 | 523.00 | 626.00 | 835.00 | 1044.00 | 1253.00 |
| BA/ZBM | 214.00 | 256.00 | 342.00 | 456.00 | 556.00 | 660.00 | 882.00 | 1099.00 | 1319.00 |

TOWER BLOT



BABY LATCH STOPPER MATERIAL : ALUMINIUM+SS

| SIZE | CP | SS | B.A/ZBM |
|------|--------|--------|---------|
| 3" | 234.00 | 259.00 | 284.00 |
| 4" | 281.00 | 309.00 | 342.00 |



L-TOWER BOLT MATERIAL : SS

| FINISH | 4" | 6" | 8" |
|--------|--------|--------|--------|
| SS | 152.00 | 217.00 | 287.00 |



TOWER BOLT

MATERIAL : SS

| FINISH | 3" | 4" | 6" | 8" | 10" | 12" |
|--------|-------|--------|--------|--------|--------|--------|
| SS | 99.00 | 109.00 | 164.00 | 209.00 | 261.00 | 314.00 |





MATERIAL : ZINC

CONCEALE

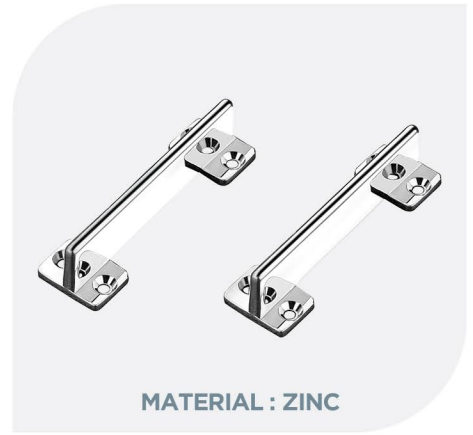
| Finish | SMALL | Paire Rate |
|---------------|--------|---------------|
| CP/Sil./BA/CA | 169.00 | |
| GG/RG/BG/ZBM | 230.00 | |



MATERIAL : ZINC

MIRROR CAP

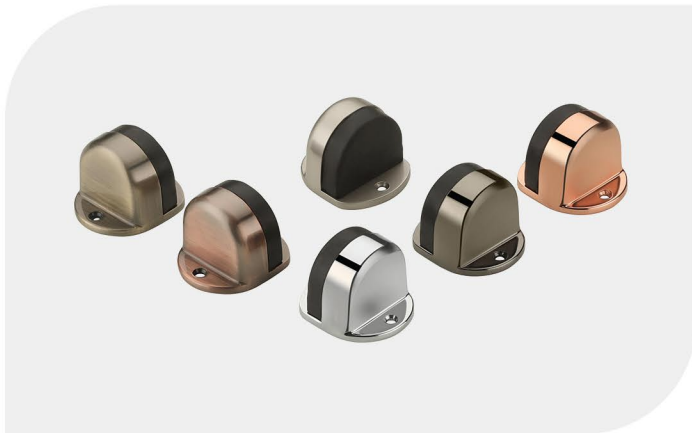
| Finish | M.R.P |
|--------------|-------|
| CP/SS/BA/CA | 43.00 |
| GG/RG/BG/ZBM | 48.00 |



MATERIAL : ZINC

AL. SLIDING DOOR GUIDE

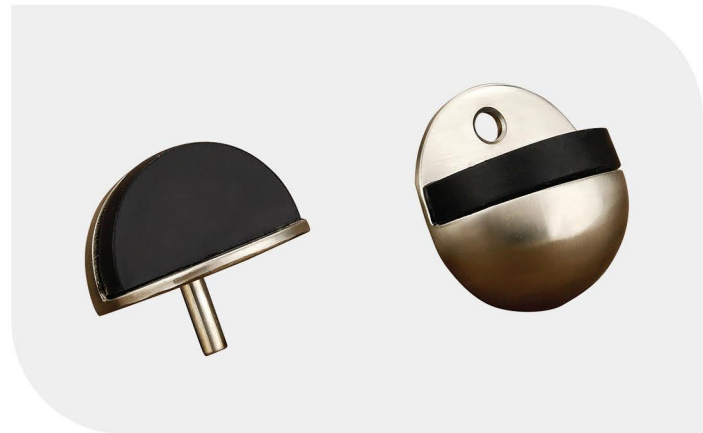
| Finish | BIG |
|--------|--------|
| CP | 137.00 |



OVEL DOOR STOP

MATERIAL : ZINC

| Finish | BIG |
|--------------|--------|
| CP/SS/BA/CA | 237.00 |
| GG/RG/BG/ZBM | 274.00 |



ROUND DOOR STOP

MATERIAL : ZINC

| Finish | BIG |
|--------------|--------|
| CP/SS/BA/CA | 185.00 |
| GG/RG/BG/ZBM | 214.00 |



SQ. FOOT STOPPER

MATERIAL : ZINC

| Finish | M.R.P |
|--------------|--------|
| CP/SS/BA/CA | 621.00 |
| GG/RG/BG/ZBM | 715.00 |



ROUND FOOT STOPPER

MATERIAL : ZINC

| Finish | BIG |
|--------------|--------|
| CP/SS/BA/CA | 526.00 |
| GG/RG/BG/ZBM | 605.00 |

FURNITURE FITTING



DOOR CHAIN

MATERIAL : ZINC+SS

| Finish | SMALL |
|---------|--------|
| SSCP/BA | 534.00 |



CABLE MANAGER

MATERIAL : ZINC

| Finish | SMALL 2" | BIG 2.5" |
|--------------|----------|----------|
| CP/SS/BA/CA | 271.00 | 331.00 |
| GG/RG/BG/ZBM | 356.00 | 418.00 |



AL AIR VENT.

MATERIAL : ALUMINIUM

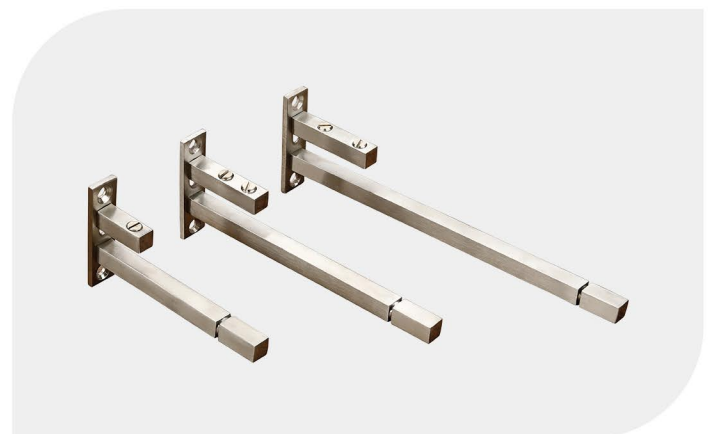
| Finish | 4X4 | 4X6 | 4X8 | 4X10 | 4X12 |
|--------|--------|--------|--------|--------|--------|
| SILVER | 197.00 | 272.00 | 346.00 | 446.00 | 524.00 |
| CP | 245.00 | 349.00 | 451.00 | 576.00 | 681.00 |
| SS | 269.00 | 386.00 | 494.00 | 636.00 | 750.00 |
| BA/ZBM | 316.00 | 449.00 | 581.00 | 745.00 | 878.00 |



AIR VENTILATOR

MATERIAL : SS

| Finish | 4X4 | 4X6 | 4X8 | 4X10 | 4X12 |
|--------|--------|--------|--------|--------|--------|
| SS | 172.00 | 214.00 | 266.00 | 326.00 | 374.00 |



CLF-BRACKET 10MM Adjustable

MATERIAL : SS

| Finish | 4" | 6" | 8" | 10" | 12" |
|--------|--------|--------|--------|--------|--------|
| SS | 227.00 | 294.00 | 361.00 | 428.00 | 494.00 |



AVIS

Material : Zinc+SS

| ALDROP | | | LATCH | | | HANDLE-8" | | T.B-6" | |
|----------|----------|---------|----------|---------|---------|--------------|--------|---------|---------|
| SIZE | FINISH | M.R.P | SIZE | FINISH | M.R.P | FINISH | M.R.P | FINISH | M.R.P |
| 10"x16mm | CP. Bro. | 1687.00 | 8"x12mm | CP Bro. | 913.00 | CP Bro. | 371.00 | SS | 230.00 |
| 12"x16mm | CP. Bro. | 1735.00 | 10"x12mm | CP Bro. | 937.00 | DOOR STOP HY | | KIT 10" | |
| 14"x16mm | CP. Bro. | 1784.00 | 12"x12mm | CP Bro. | 985.00 | FINISH | M.R.P | FINISH | M.R.P |
| | | | 14"x12mm | CP Bro. | 1009.00 | SS | 189.00 | CP Bro. | 3390.00 |



BOSS

Material : Zinc+SS

| ALDROP | | | LATCH | | | HANDLE-8" | | T.B-6" | |
|----------|---------|---------|----------|---------|--------|--------------|--------|---------|---------|
| SIZE | FINISH | M.R.P | SIZE | FINISH | M.R.P | FINISH | M.R.P | FINISH | M.R.P |
| 10"x16mm | CP Bro. | 1677.00 | 8"x12mm | CP Bro. | 893.00 | CP Bro. | 371.00 | SS | 230.00 |
| 12"x16mm | CP Bro. | 1723.00 | 10"x12mm | CP Bro. | 917.00 | DOOR STOP HY | | KIT 10" | |
| 14"x16mm | CP Bro. | 1772.00 | 12"x12mm | CP Bro. | 965.00 | FINISH | M.R.P | FINISH | M.R.P |
| | | | 14"x12mm | CP Bro. | 989.00 | SS | 189.00 | CP Bro. | 3360.00 |

DOOR KIT



CASIO

Material : Zinc+SS

| ALDROP | | | LATCH | | | HANDLE-8" | | T.B-6" | |
|----------|---------|---------|----------|---------|--------|--------------|--------|---------|---------|
| SIZE | FINISH | M.R.P | SIZE | FINISH | M.R.P | FINISH | M.R.P | FINISH | M.R.P |
| 10"x16mm | CP Bro. | 1723.00 | 8"x12mm | CP Bro. | 865.00 | CP Bro. | 371.00 | SS | 230.00 |
| 12"x16mm | CP Bro. | 1772.00 | 10"x12mm | CP Bro. | 888.00 | DOOR STOP HY | | KIT 10" | |
| 14"x16mm | CP Bro. | 1819.00 | 12"x12mm | CP Bro. | 937.00 | FINISH | M.R.P | FINISH | M.R.P |
| | | | 14"x12mm | CP Bro. | 962.00 | SS | 189.00 | CP Bro. | 3378.00 |



CANON

Material : Zinc+SS

| ALDROP | | | LATCH | | | HANDLE-8" | | T.B-6" | |
|----------|--------|---------|----------|--------|---------|--------------|--------|---------|---------|
| SIZE | FINISH | M.R.P | SIZE | FINISH | M.R.P | FINISH | M.R.P | FINISH | M.R.P |
| 10"x16mm | SSCP | 2248.00 | 8"x12mm | SSCP | 1356.00 | SSCP | 466.00 | SS | 230.00 |
| 12"x16mm | SSCP | 2296.00 | 10"x12mm | SSCP | 1381.00 | DOOR STOP HY | | KIT 10" | |
| 14"x16mm | SSCP | 2345.00 | 12"x12mm | SSCP | 1428.00 | FINISH | M.R.P | FINISH | M.R.P |
| | | | 14"x12mm | SSCP | 1453.00 | SS | 189.00 | SSCP | 4491.00 |



KODAK

Material : Zinc+SS

| ALDROP | | | HANDLE-8" | |
|----------|---------|---------|---------------------|---------|
| SIZE | FINISH | M.R.P | FINISH | M.R.P |
| 10"x16mm | CP Bro. | 1703.00 | CP Bro. | 371.00 |
| 12"x16mm | CP Bro. | 1750.00 | DOOR STOP HY | |
| 14"x16mm | CP Bro. | 1799.00 | FINISH | M.R.P |
| | | | SS | 189.00 |
| LATCH | | | T.B-6" | |
| SIZE | FINISH | M.R.P | FINISH | M.R.P |
| 8"x12mm | CP Bro. | 913.00 | SS | 230.00 |
| 10"x12mm | CP Bro. | 937.00 | KIT 10" | |
| 12"x12mm | CP Bro. | 985.00 | FINISH | M.R.P |
| 14"x12mm | CP Bro. | 1009.00 | CP Bro. | 3407.00 |



ROUND

Material : Zinc+SS

| ALDROP | | | HANDLE-8" | |
|----------|--------|---------|---------------------|---------|
| SIZE | FINISH | M.R.P | FINISH | M.R.P |
| 10"x16mm | CP/SS | 1627.00 | CP/SS | 382.00 |
| 12"x16mm | CP/SS | 1675.00 | DOOR STOP HY | |
| 14"x16mm | CP/SS | 1723.00 | FINISH | M.R.P |
| | | | SS | 189.00 |
| LATCH | | | T.B-6" | |
| SIZE | FINISH | M.R.P | FINISH | M.R.P |
| 8"x12mm | CP/SS | 816.00 | SS | 230.00 |
| 10"x12mm | CP/SS | 842.00 | KIT 10" | |
| 12"x12mm | CP/SS | 888.00 | FINISH | M.R.P |
| 14"x12mm | CP/SS | 913.00 | CP/SS | 3305.00 |



SQUARE

Material : Zinc+SS

| ALDROP | | | HANDLE-8" | |
|----------|--------|---------|---------------------|---------|
| SIZE | FINISH | M.R.P | FINISH | M.R.P |
| 10"x16mm | CP/SS | 1645.00 | CP/SS | 382.00 |
| 12"x16mm | CP/SS | 1692.00 | DOOR STOP HY | |
| 14"x16mm | CP/SS | 1740.00 | FINISH | M.R.P |
| | | | SS | 189.00 |
| LATCH | | | T.B-6" | |
| SIZE | FINISH | M.R.P | FINISH | M.R.P |
| 8"x12mm | CP/SS | 873.00 | SS | 230.00 |
| 10"x12mm | CP/SS | 897.00 | KIT 10" | |
| 12"x12mm | CP/SS | 945.00 | FINISH | M.R.P |
| 14"x12mm | CP/SS | 969.00 | CP/SS | 3343.00 |

THE RESULT ARE ALL THERE TO GET FASCINATED.

| Performance Standard | |
|--|----------|
| Solvent resistance (acetone test) | 1000+ |
| Pencil hardness | 4H+ |
| Corrosion resistance (Zinc die cast) Hours | 200 Hrs+ |
| Abrasion resistance liters sand | 18+ |
| Mortise life cycle test | 200,000+ |
| Lock life cycle test | 100,000+ |
| Cylinder life cycle test | 100,000+ |
| Door closer life cycle test | 500,000+ |



SHREEJI METAL TECH

Shivam Industries Area,
Plot No. 15, B/h., Labh Petroleum,
Nr. Meera Udhyog, N/H 8B, Aji Road,
Rajkot - 360 002. (Gujarat) INDIA

P : +91 99138 56565
E:mail : info@sagahardware.com
Web : www.sagahardware.com



SCAN QR CODE TO VISIT OUR WEBSITE